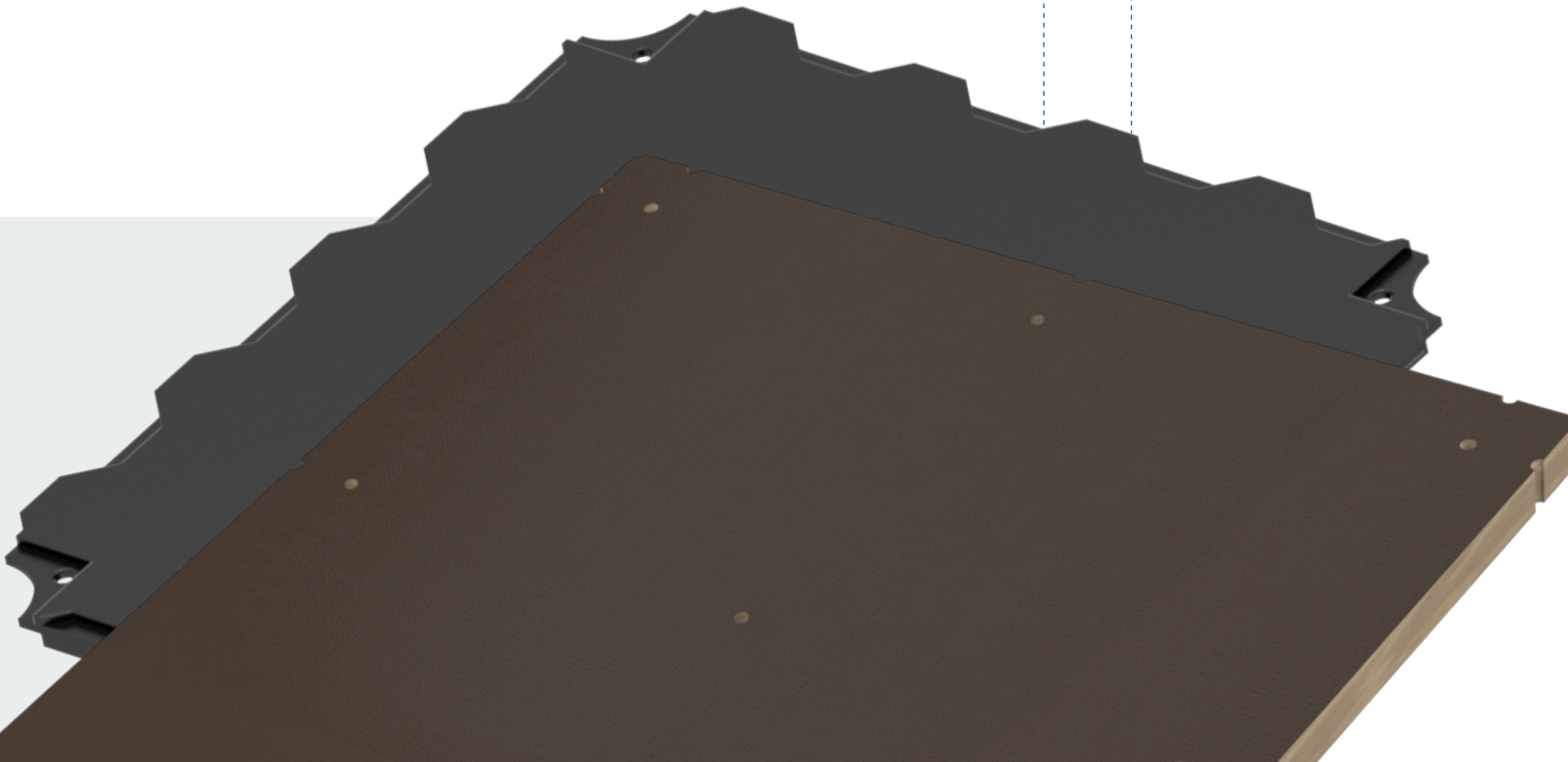


octafloor classic/eco

Technics 12/25

Flexible double floor systems



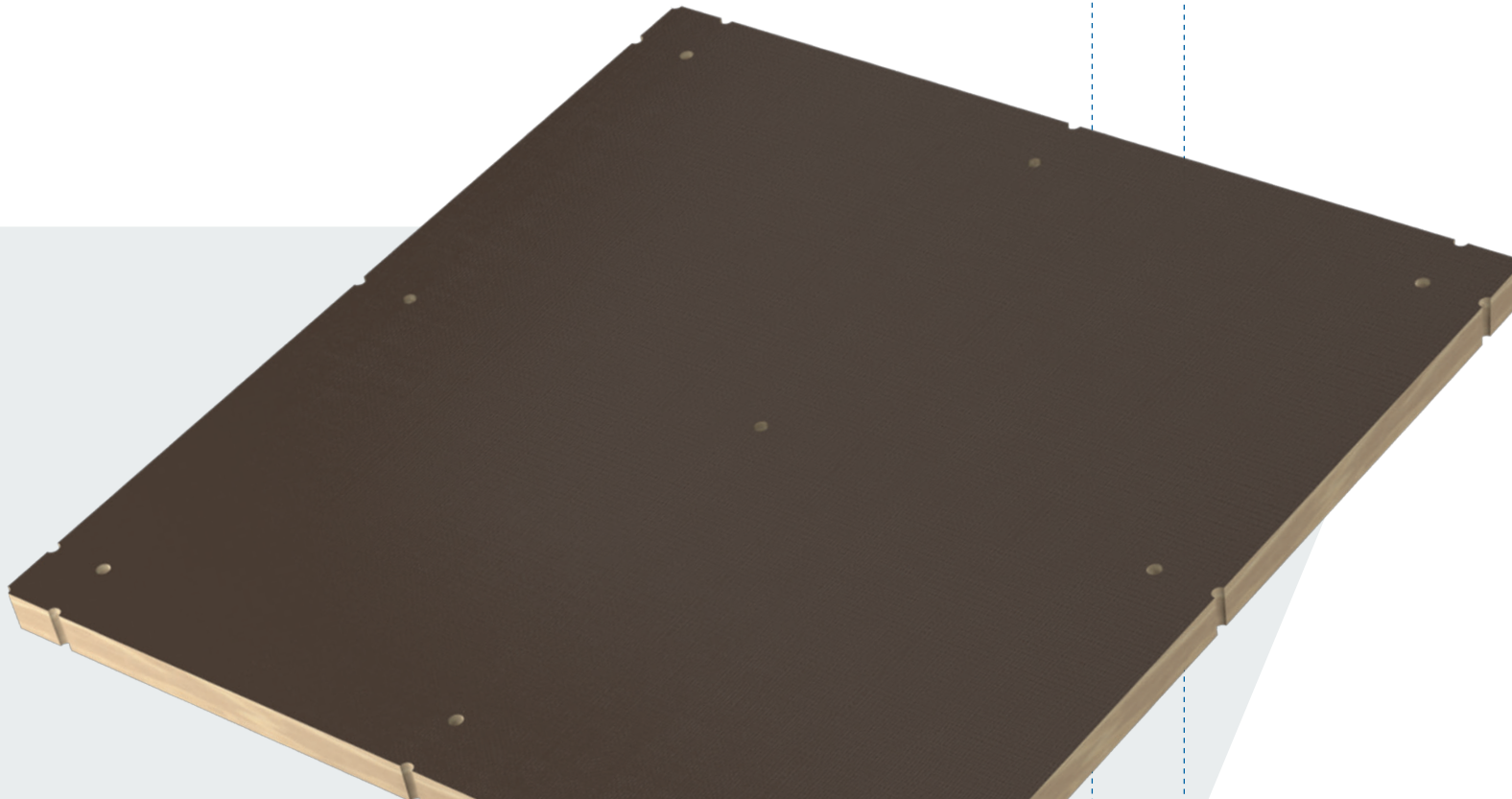
↗ Contents

↗ octaclassic floor	4
↗ octaeco floor	17

octafloor classic

» Technics 12/25

Flexible double floor system: indoor



➤ Contents

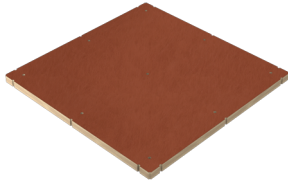
➤ octaclassic floor	
➤ Basic parts	5
➤ Accessories	7
➤ Tools	11
➤ technical information	12

Basic parts

octaclassic floor

Sandwich panel

L 998 × W 998 × H 40 mm

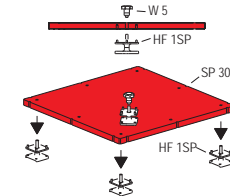
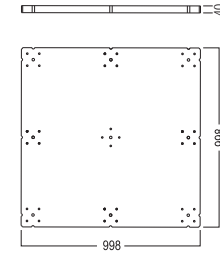


SP 30.90

wood, medium density fibre board on both sides, MDF B1, flame-retardant

smooth surface on top and on the bottom, with a surrounding frame, using waterproofed glue, wooden lattice Pino in the core, can be used as middle-, edge- or corner panel, with holes for the positioning of adjustable feet HF 1SP / HF 3SP or base plate FP 1

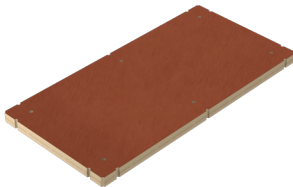
L 998 × W 998 × H 40 mm | 13.573 kg



for higher load factor up to 9 adjustable feet can be used

Sandwich panel

L 998 × W 498 × H 40 mm

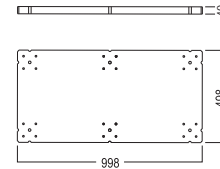


SP 50.90

wood, medium density fibre board on both sides, MDF B1, flame-retardant

smooth surface on top and on the bottom, with a surrounding frame, using waterproofed glue, wooden lattice Pino in the core, can be used as middle-, edge- or corner panel, with holes for the positioning of adjustable feet HF 1SP / HF 3SP or base plate FP 1

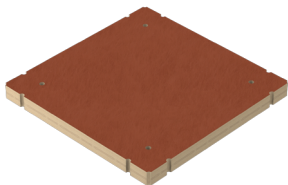
L 998 × W 498 × H 40 mm | 6.415 kg



for higher load factor up to 6 adjustable feet can be used

Sandwich panel

L 498 × W 498 × H 40 mm

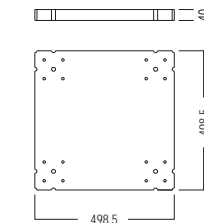


SP 60.90

wood, medium density fibre board on both sides, MDF B1, flame-retardant

smooth surface on top and on the bottom, with a surrounding frame, using waterproofed glue, wooden lattice Pino in the core, can be used as middle-, edge- or corner panel, with holes for the positioning of adjustable feet HF 1SP / HF 3SP or base plate FP 1

L 498 × W 498 × H 40 mm | 2.825 kg



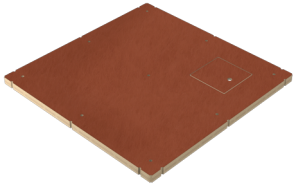
for higher load factor up to 4 adjustable feet can be used

Basic parts

octaclassic floor

Sandwich panel

with cutout
L 998 x W 998 x H 40 mm

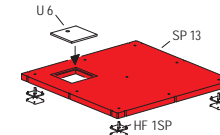
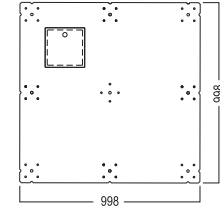


SP 13.90

wood, medium density fibre board on both sides, MDF B1,
flame-retardant

smooth surface on top and on the bottom, with a surrounding frame, using waterproofed glue, wooden lattice Pino in the core, can be used as middle-, edge- or corner panel, with holes for the positioning of adjustable feet HF 1SP / HF 3SP or base plate FP 1, incl. a cut-out 195 x 195 mm and 1 x cover plate U 6

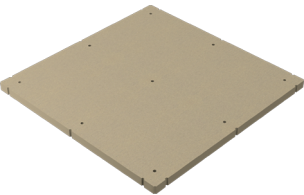
L 998 x W 998 x H 40 mm | 13.973 kg



for higher load factor
up to 9 adjustable feet
can be used

Floor panel

L 998 x W 998 x H 39 mm

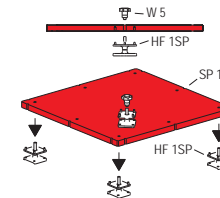
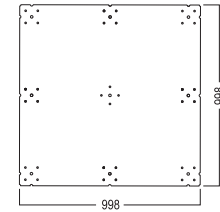
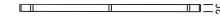


SP 12.90

mdf board

for any cut-outs or special panel shapes, with holes for the positioning of adjustable feet HF 1SP / HF 3SP and base plate FP 1

L 998 x W 998 x H 39 mm | 26.5 kg



up to 9 adjustable feet
can be used

Accessories

octaclassic floor

Base plate

L 85 × W 85 × H 27 mm

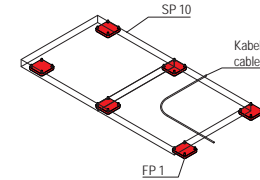
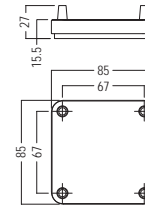


FP 1.90

plastic/rubber

for mounting of sandwich panel SP 10 ... SP 40 with anti-rattle pad, for low pedestals, minimum height 56 mm, no height adjustment possible, clearance height of 16 mm enables cabling

L 85 × W 85 × H 27 mm | 0.106 kg

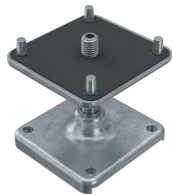


not adjustable in height

Adjustable foot

55-105 mm

L 90 × W 85 × H 105 mm

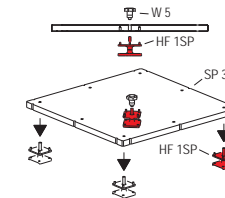
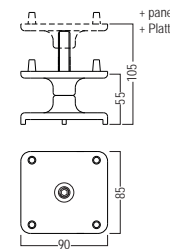


HF 1SP.00

zinc die cast

height adjustable 55-105 mm, adjustable from top with hexagon wrench W 2, with upper retainer pins and anti rattle pad U 3

L 90 × W 85 × H 105 mm | 0.815 kg

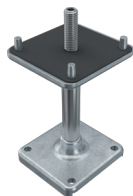


load capacity max. 2000 kg

Adjustable foot

135-185 mm

L 90 × W 85 × H 185 mm

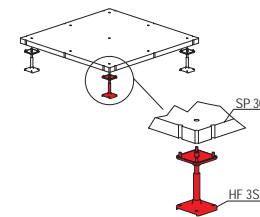
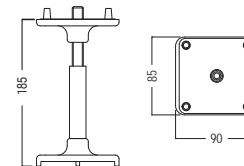


HF 3SP.00

zinc die cast

stepless height adjustment from 135 to 185 mm, adjustable from above with hexagon wrench SW 6, with upper retainer pins and anti rattle pad U 3

L 90 × W 85 × H 185 mm | 0.965 kg

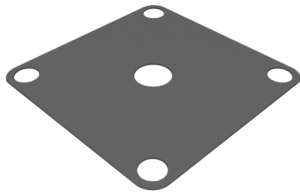


load capacity max. 2000 kg

octaclassic floor

Anti rattle

L 82 × W 82 × H 1 mm

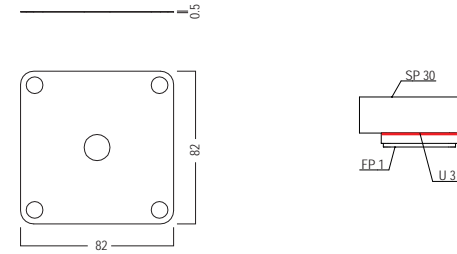


U 3.90

rubber, black

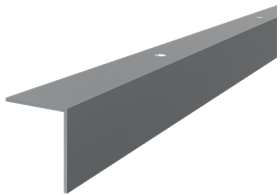
for adjustable feet HF 1SP / HF 3SP or base plate FP 1, also prevents slipping of panels

L 82 × W 82 × H 1 mm | 0.004 kg



Skirting extrusion

L 5000 × W 40 × H 60 mm

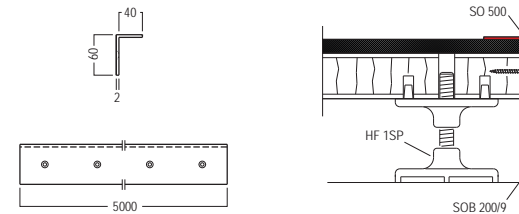


SO 500.11

aluminium

edging element of floor construction and fixing for skirting rail SOB 200/9, every 500 mm countersunk holes for wood screws 4 mm dia

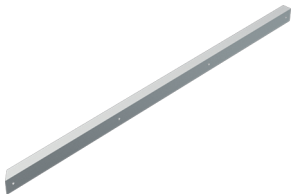
L 5000 × W 40 × H 60 mm | 2.522 kg



Skirting extrusion

Miter 45°, left

L 1540 × W 40 × H 60 mm

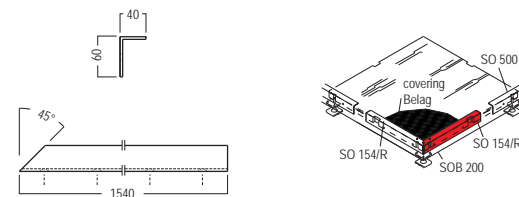


SO 154/L.11

aluminium

1 × skirting extrusion made of SO 500, edging element for floor construction and fixing for skirting rail SOB 200/9, with 4 × countersunk hole for wood screws Ø 4 mm, 45° miter cut on the left side

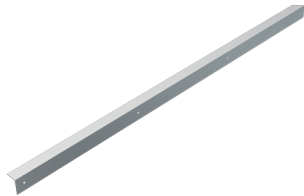
L 1540 × W 40 × H 60 mm | 0.813 kg



octaclassic floor

Skirting extrusion

Miter 45°, right
L 1540 × W 40 × H 60 mm

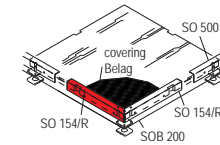
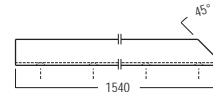


SO 154/R.11

aluminium

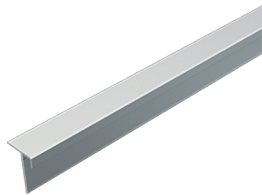
1 × skirting extrusion made of SO 500, edging element for floor construction and fixing for skirting rail SOB 200/9, with 4 × countersunk hole for wood screws Ø 4 mm, 45° miter cut on the right side

L 1540 × W 40 × H 60 mm | 0.813 kg



Skirting extrusion

for LED module
L 5000 × W 40 × H 58 mm

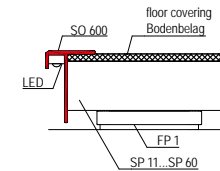
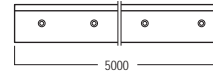
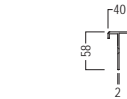


SO 600.01

aluminium

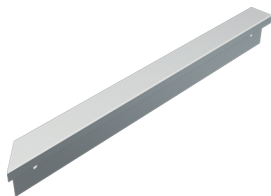
for use with sandwich panel SP 30 – SP 60, countersunk holes every 500 mm for wood screws 4 mm dia., in connection with base plate FP 1

L 5000 × W 40 × H 58 mm | 3.31 kg



Skirting extrusion

for LED-module
Miter 45°, left

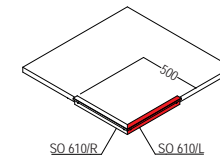
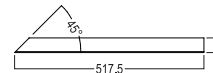


SO 610/L.01

aluminium

1 × skirting extrusion made of SO 600, for use with sandwich panel SP 30 – SP 60, 2 × countersunk hole for wood screws 4 mm dia., in connection with base plate FP 1, miter cut 45° on the left side

L 517.5 × W 40 × H 58 mm | 0.339 kg

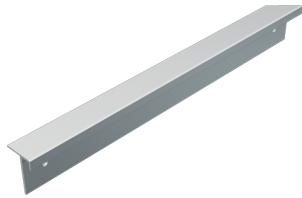


Accessories

octaclassic floor

Skirting extrusion

for LED module
Miter 45°, right

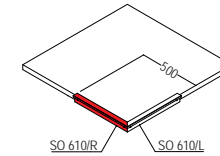
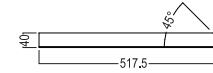
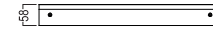


SO 610/R.01

aluminium

1 × skirting extrusion made of SO 600, for use with sandwich panel SP 30 – SP 60, 2 × countersunk hole for wood screws 4 mm dia., in connection with base plate FP 1, miter cut 45° on the right side

L 517.5 × W 40 × H 58 mm | 0.339 kg



Foot locking device

L 63 × W 63 × H 62 mm

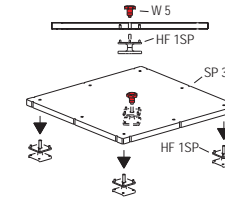
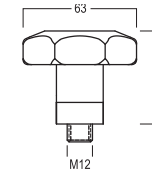


W 5.90

steel/plastic

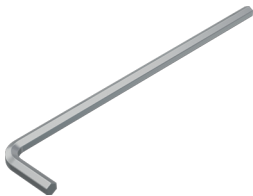
used during panel installation as installation aid for positioning an adjustable foot HF 1SP / HF 3SP in the center of a sandwich panel SP 30, SP 13 and SP 12, with internal thread M12

L 63 × W 63 × H 62 mm | 0.11 kg



Hexagon wrench

A/F 6 mm

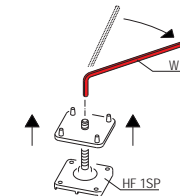


W 2.90

steel

to adjust feet HF 1SP / HF 3SP, A/F 6 mm

L 0 × B 6 × H 6 mm | 0.304 kg



Tape

double-sided
50 meter roll



TP 1.90

rayon

for fixing carpets on phenol coated panels SP 30 / SP 13 / SP 12 / SP 50 / SP 60, layers on both sides with rubber adhesive, 50 m long

W 50 × H 1 mm | 0.2 kg

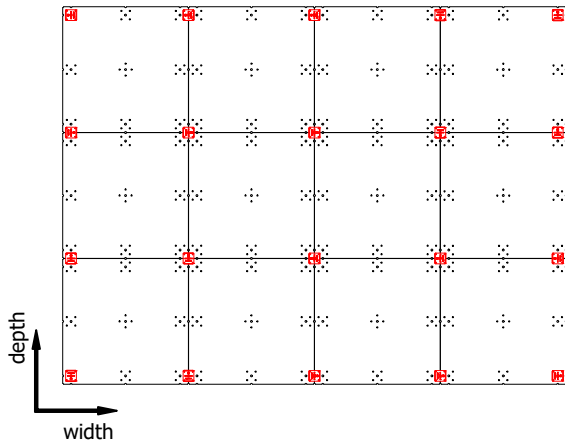
➤ technical information

➤ TI-DB-3.2	13
octaclassic floor calculation of adjustable feet	
➤ TI-DB-3.4	14
octaclassic floor Positioning of adjustable feet	
➤ TI-DB-5.0	15
octaclassic floor adaption of EPL 2 to sandwich panel SP 30 (SP 13)	

Light Load:

750 kg/panel (1x1m) (*)

Positioning of adjustable feet in the corners of the floor panels.



Number of adjustable feet required:

Number of panels in width + 1
x number of panels in depth + 1

= number of adjustable feet

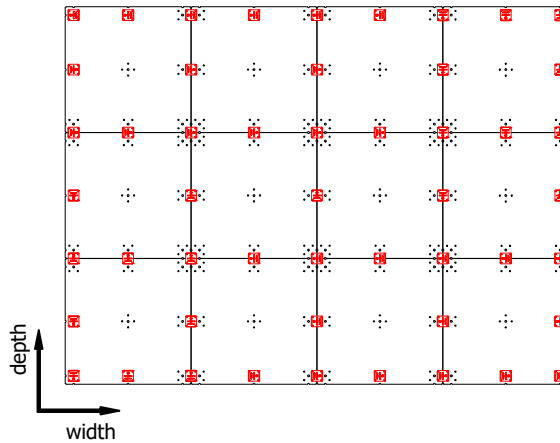
Example:

Floor space: 4 panels x 3 panels
(4+1) x (3+1) = 20 adjustable feet

Medium Load:

2000 kg/panel (1x1m) (*)

Positioning of adjustable feet in the corners and on the edges of the floor panels.



Number of adjustable feet required:

Number of panels in width x 2 + 1
x number of panels in depth x 2 + 1
- total number of panels

= number of adjustable feet

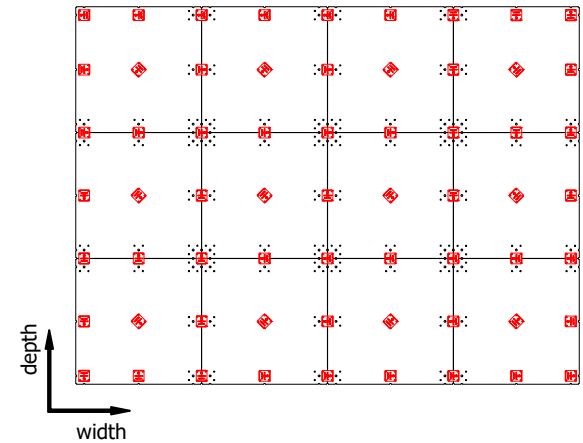
Example:

Floor space: 4 panels x 3 panels
(4x2+1) x (3x2+1) - 12 = 51 adjustable feet

High Load:

5000 kg/panel (1x1m) (*)

Positioning of adjustable feet in the corners, on the edges and in the center of the floor panels.



Number of adjustable feet required:

Number of panels in width x 2 + 1
x number of panels in depth x 2 + 1

= number of adjustable feet

Example:

Floor space: 4 panels x 3 panels
(4x2+1) x (3x2+1) = 63 adjustable feet

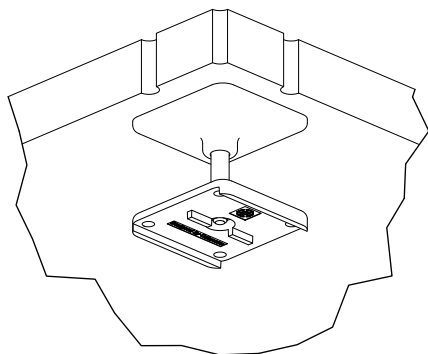
(*) Surface load = static load evenly distributed over the entire surface of a panel (1x1m).

For items SP 13, SP 30, SP 50 and SP 60, a permissible point load of 1.4 kN (approx. 140 kg) distributed over an area of 25 x 25 mm has been determined.

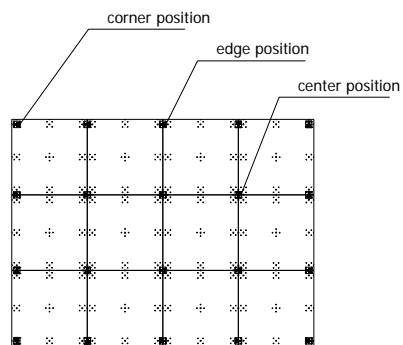
The same load values can be assumed for SP 12.

These values do not apply to the cover plate U6 in panel SP13. No load values are available here.

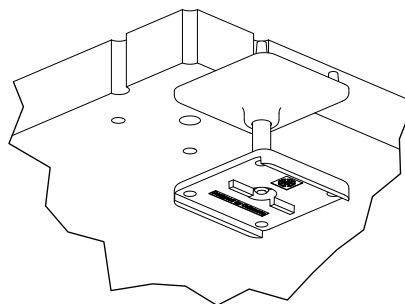
Corner Position



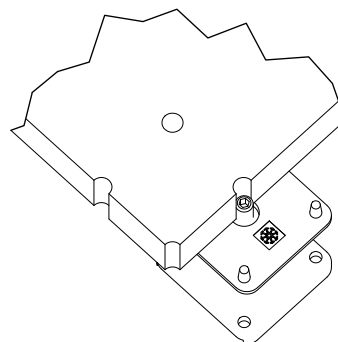
On corner panels, the adjustable feet are placed without lateral overlap on either side. Only one panel can be placed onto one foot.



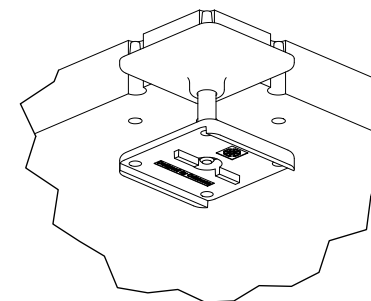
Edge Position



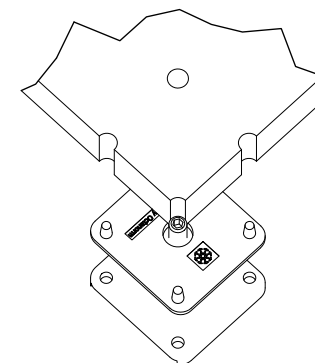
On edge panels, the adjustable feet are placed with a lateral overlap on one side. Two panels can be placed onto one foot.



Center Position

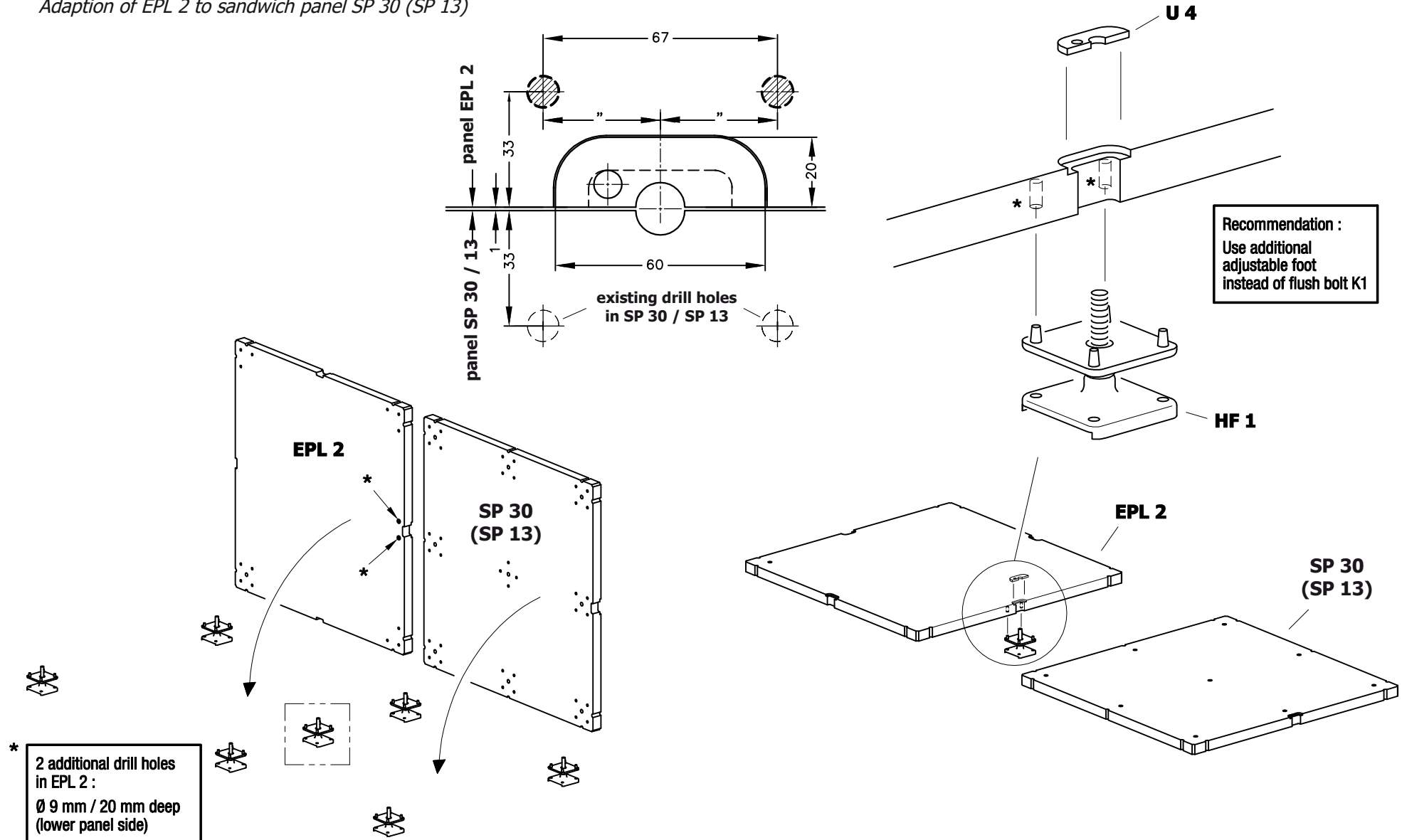


On center panels, the adjustable feet are placed with an overlap on both sides. Four panels can be placed onto one foot.



. Floor Systems

Adaption of EPL 2 to sandwich panel SP 30 (SP 13)



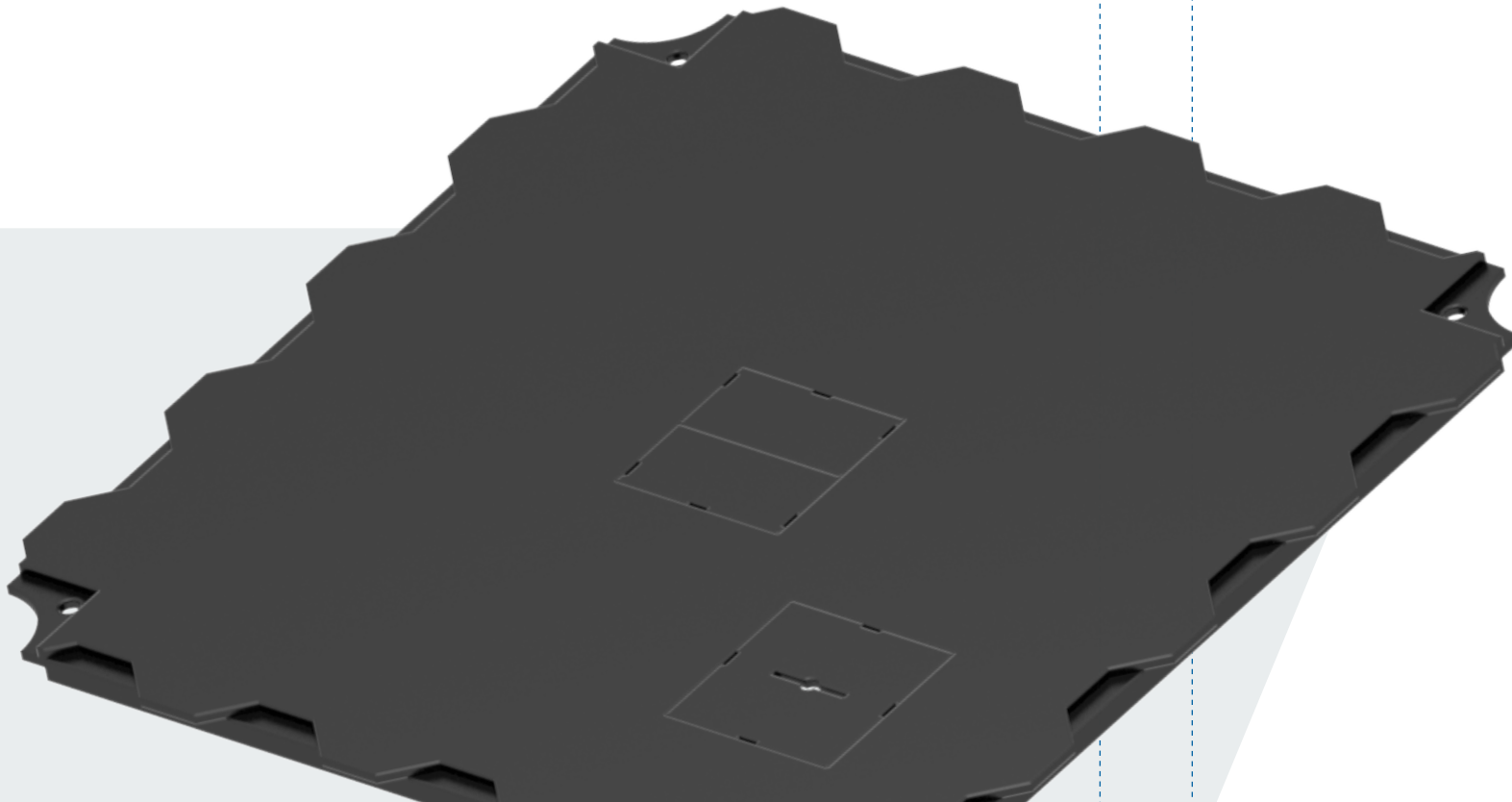
TI-DB-5.0 EW 3270.00 - 03.03.09/HB - 11/2009 shift

octafloor

eco

» Technics 12/25

Sustainable double floor system: in- and outdoor



➤ Contents

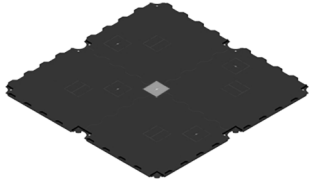
➤ octaeco floor	
➤ Basic parts	18
➤ Accessories	20
➤ Tools	27
➤ Sets	28
➤ technical information	29

Basic parts

octaeco floor

Floor panel

flame retardant Cfl-S1
1 m² (4 floor panels)

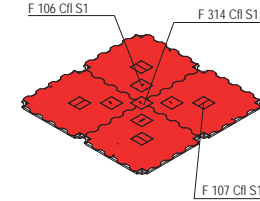
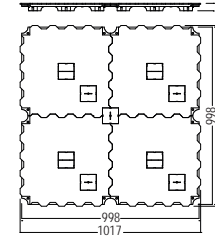


F 304 CFL S1.90

polypropylene, black

1 m² consisting of 4 × floor panel, each floor panel with 2 × cable outlet (dia. 35/70 mm), incl. 4 × cover plate F 106 Cfl S1, 8 × cover plate F 107 Cfl S1 and 1 × connector F 314 Cfl S1, flame retardant Cfl-S1, connectors for F 304 not included

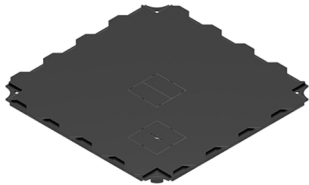
L 1017 × W 1017 × H 43 mm | 10.96 kg



1 cable outlets dia. 35/70 mm

Revision panel

flame retardant Cfl-S1
removable

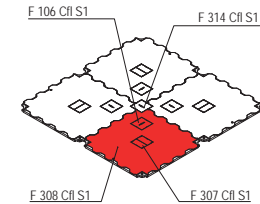
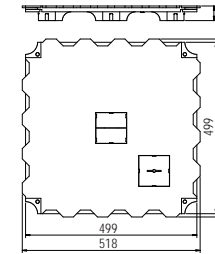


F 308 CFL S1.90

polypropylene, black

1 × floor panel for individual cut-outs or customized shapes, the revision panel can be removed upwards from the laid floor, with 2 × cut out for cable outlet (Ø 35/70 mm), 2 × cover plate F 107 Cfl S1 and 1 × cover plate F 106 Cfl S1, flame retardant Cfl-S1, connector for connection to other floor panels not included

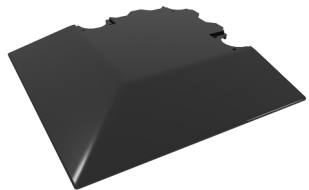
L 498 × W 498 × H 43 mm | 2.5 kg



1 cable outlets dia. 35/70 mm

Slope edge corner tile

flame retardant Cfl-S1
Corner

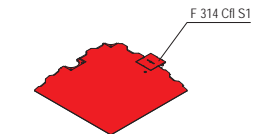
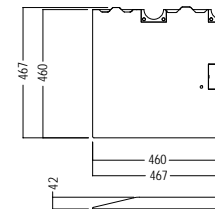


F 309 CFL S1.90

polypropylene, black

1 × Slope edge corner tile F 309-oZ Cfl S1 with 1 × cover plate F 314 Cfl S1 for connection with slope edge element F 315 Cfl S1, flame retardant Cfl-S1

L 467 × W 467 × H 42 mm | 1.874 kg



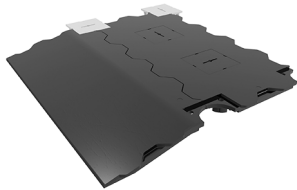
1 standard size of 500 x 500 mm is obtained incl. SO 640

Basic parts

octaeco floor

Slope edge tile

flame retardant CfI-S1
L 495 × W 468 × H 43 mm

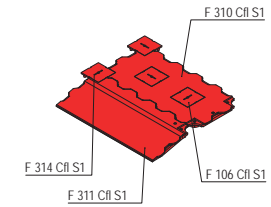
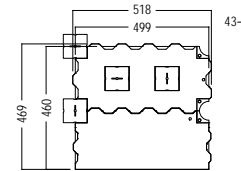


F 315 CFL S1.90

polypropylene, black

1 × floor panel F 310 CfI S1 with 2 × cut out for cable outlet (dia. 35/70 mm) incl. 2 × cover plate F 106 CfI S1, 2 × cover plate F 314 CfI S and 1 × slope edge element F 311 CfI S1 (fixed to F 310 CfI S1 with 2 × connector SO 650), flame retardant CfI-S1

L 495 × W 468 × H 43 mm | 2.3 kg

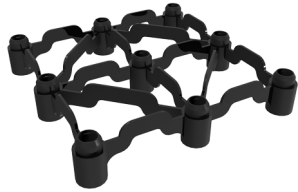


Accessories

octaeco floor

Height adaptor

flame retardant Cfl-S1
for floor panel 498x498 mm

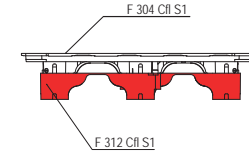
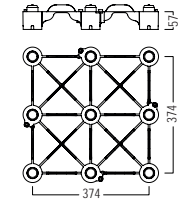


F 312 CFL S1.90

polypropylene, black

1 x attachment for floor panel 498 x 498 mm, raises the floor by another 57 mm (floor panel + height adaptor = 100 mm), flame retardant Cfl-S1

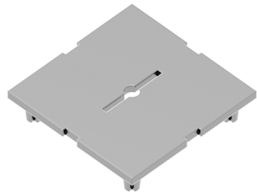
L 374 x W 374 x H 79 mm | 1.048 kg



max. 3 adaptors on top of each other possible (total height w/floor panel max. 214 mm)

Cover plate

flame retardant Cfl-S1
for a strong connection

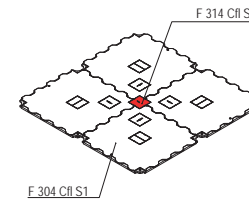
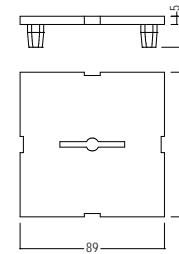


F 314 CFL S1.90

polypropylene, grey

for connection of the floor panels in the middle of floor panel F 304 Cfl S1 (part of F 304 Cfl S1), strong press fit, flame retardant Cfl-S1

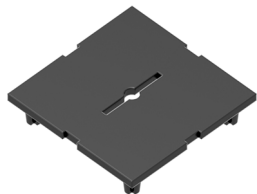
L 89 x W 89 x H 19 mm | 0.04 kg



for a stronger connection between the panels as F 106 Cfl S1

Cover plate

flame retardant Cfl-S1
for cable outlet

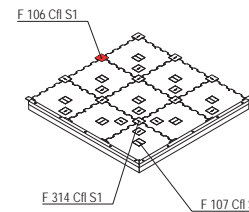
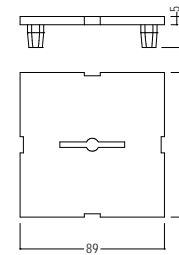


F 106 CFL S1.90

polypropylene, black

to cover the cable outlets in floor panel F 304 Cfl S1, flame retardant Cfl-S1

L 89 x W 89 x H 19 mm | 0.04 kg



Accessories

octaeco floor

Cover plate

flame retardant Cfl-S1
for cable outlet

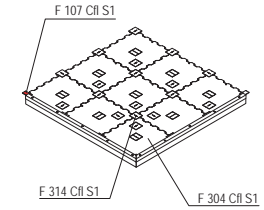
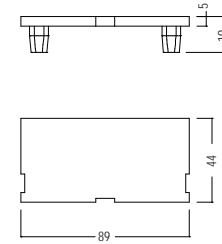


F 107 CFL S1.90

polypropylene, black

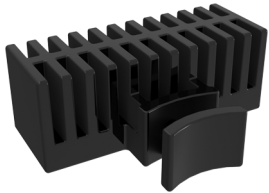
to cover half a cable outlet in floor panel F 304 Cfl S1, flame retardant Cfl-S1

L 89 × W 44 × H 19 mm | 0.02 kg



Spacer

flame retardant Cfl-S1
for skirting extrusion

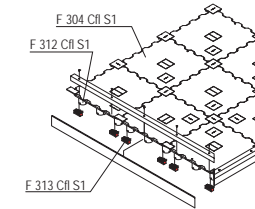
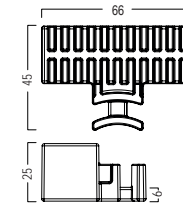


F 313 CFL S1.90

polypropylene

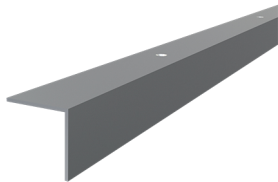
to be used with floor panel F 304 Cfl S1 and height adaptor F 312 Cfl S1, for mounting of skirting extrusion, flame retardant Cfl-S1

L 74 × W 45 × H 28 mm | 0.028 kg



Skirting extrusion

for floor panel F 304 Cfl S1
L 5000 × W 40 × H 40 mm

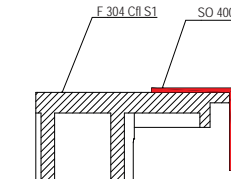
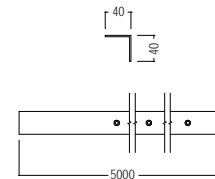


SO 400.01

aluminium

to cover the outer edges of the floor panels F 304 Cfl S1, cut the extrusion for individual length, countersunk drill every 340 mm for woodscrews 4 mm dia.

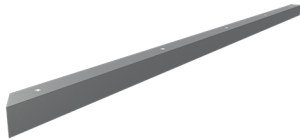
L 5000 × W 40 × H 40 mm | 2.16 kg



octaeco floor

Skirting extrusion

Miter 45°, left
for floor panel F 304 Cfl S1

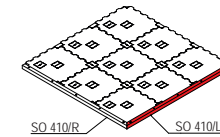
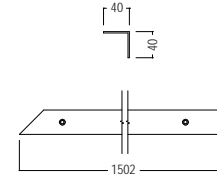


SO 410/L.01

aluminium

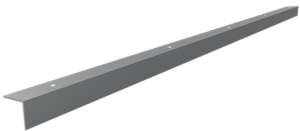
1 x skirting extrusion made of SO 400, to cover the edges of the floor panel F 304 Cfl S1, incl. 5 x countersunk drill for woodscrews 4 mm dia., 45° miter cut on the left side

L 1502 x W 40 x H 40 mm | 0.649 kg



Skirting extrusion

Miter 45°, right
for floor panel F 304 Cfl S1

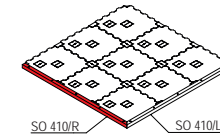
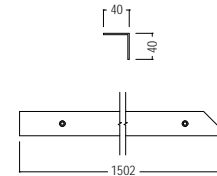


SO 410/R.01

aluminium

1 x skirting extrusion made of SO 400, to cover the edges of the floor panel F 304 Cfl S1, incl. 5 x countersunk drill for woodscrews 4 mm dia., 45° miter cut on the right side

L 1502 x W 40 x H 40 mm | 0.649 kg



Skirting extrusion

for LED-module
L 5000 x W 55 x H 42 mm

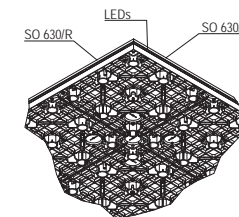
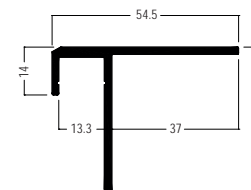


SO 630.01

aluminium

for use with floor panel F 304 Cfl S1, every 500 mm countersunk holes for screws 4 mm dia., if required, LED strip lighting can be mounted

L 5000 x W 55 x H 42 mm | 3.2 kg



octaeco floor

Skirting extrusion

Miter 45°, left
for LED-module

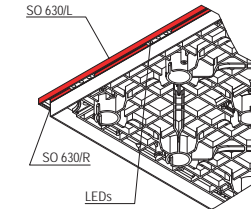
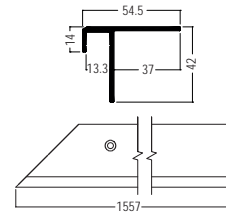


SO 630/L.01

aluminium

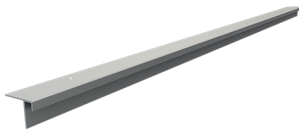
1 × skirting extrusion made of SO 630, for use with floor panel F 304 Cfl S1, every 500 mm countersunk holes for screws 4 mm dia., if required, LED strip lighting can be mounted, 45° miter cut on the left side

L 1557 × W 55 × H 42 mm | 0.998 kg



Skirting extrusion

Miter 45°, right
for LED-module

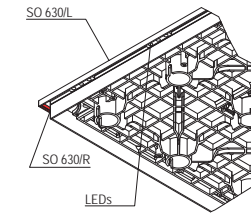
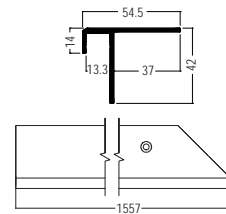


SO 630/R.01

aluminium

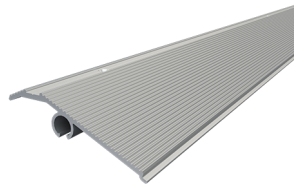
1 × skirting extrusion made of SO 630, for use with floor panel F 304 Cfl S1, every 500 mm countersunk holes for screws 4 mm dia., if required, LED strip lighting can be mounted, 45° miter cut on the right side

L 1557 × W 55 × H 42 mm | 0.998 kg



Floor edging

for floor panel F 304 Cfl S1
L 5000 × W 108 × H 40 mm

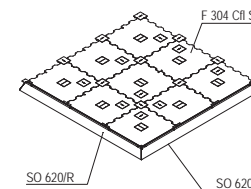
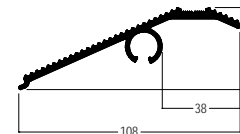


SO 620.01

aluminium

for use with floor panel F 304 Cfl S1, every 500 mm countersunk holes for screws 4 mm dia.

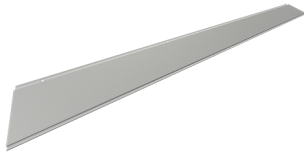
L 5000 × W 108 × H 40 mm | 6.12 kg



octaeco floor

Floor edging

Miter 45°, left
for floor panel F 304 Cfl S1

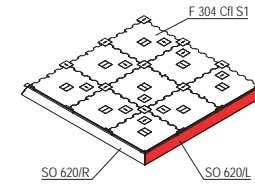
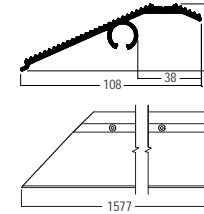


SO 620/L.01

aluminium

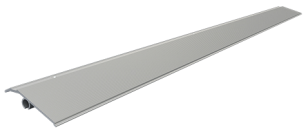
1 × floor edging made of SO 620, for use with floor panel F 304 Cfl S1, every 500 mm countersunk holes for screws 4 mm dia., 45° miter cut on the left side

L 1577 × W 108 × H 40 mm | 2.04 kg



Floor edging

Miter 45°, right
for floor panel F 304 Cfl S1

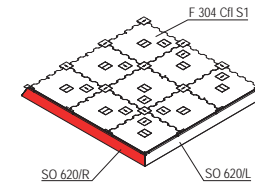
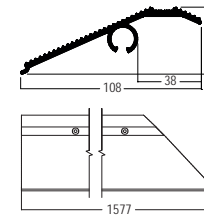


SO 620/R.01

aluminium

1 × floor edging made of SO 620, for use with floor panel F 304 Cfl S1, every 500 mm countersunk holes for screws 4 mm dia., 45° miter cut on the right side

L 1577 × W 108 × H 40 mm | 2.04 kg



Floor covering extr.

for slope edge tiles
L 3150 × W 101 × H 4 mm

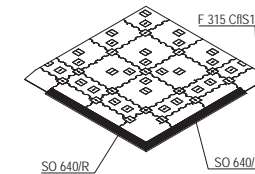
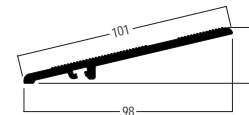


SO 640.00

aluminium

to be used with slope floor tiles F 309 Cfl S1 and F 315 Cfl S1, without countersunk holes for screws 4 mm dia.

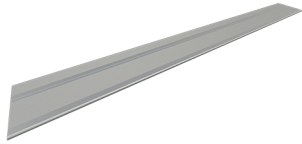
L 3150 × W 101 × H 4 mm | 5.48 kg



octaeco floor

Floor covering extr.

Miter 45°, left
for slope edge tiles

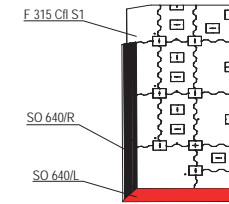
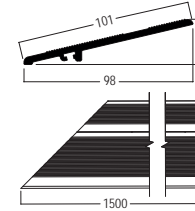


SO 640/L.00

aluminium

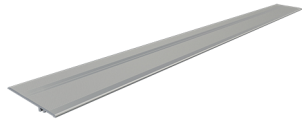
1 × floor edging made of SO 640, for use with floor panel slope floor tiles F 309 Cfl S1 and F 315 Cfl S1, without countersunk holes for screws 4 mm dia., 45° miter cut on the left side

L 1500 × W 101 × H 4 mm | 1.611 kg



Floor covering extr.

Miter 45°, right
for slope edge tiles

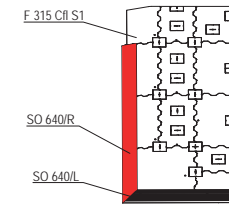
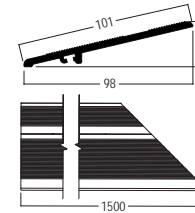


SO 640/R.00

aluminium

1 × floor edging made of SO 640, for use with floor panel slope floor tiles F 309 Cfl S1 and F 315 Cfl S1, without countersunk holes for screws 4 mm dia., 45° miter cut on the right side

L 1500 × W 101 × H 4 mm | 1.611 kg



Knuckle

for SO 640
L 30 × W 30 × H 2 mm

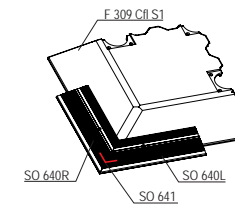
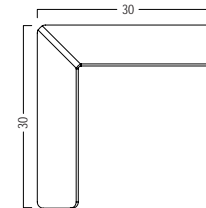


SO 641.01

aluminium

to be used with skirting extrusion SO 640, for reinforcement of corner connection

L 30 × W 30 × H 2 mm | 0.004 kg



Skirting extrusion

for F 315
for laminate

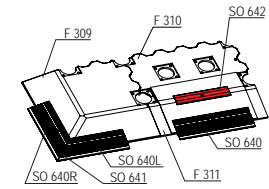
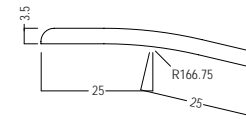


SO 642.01

aluminium

Laminate skirting to be used with slope floor tile F 315 CfI S1, 5000 mm long

5000 mm long | 2.4 kg



Tools

octaeco floor

Tool set

small
L 175 x W 27 x H 45 mm



F 1.37

plastic/steel

to remove the cover plate F 106 Cfl S1 from floor panel F 304 Cfl S1
L 175 x W 27 x H 45 mm | 0.108 kg



Tool set

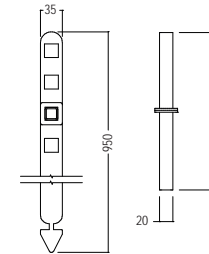
big
L 35 x W 240 x H 950 mm



F 2.44

stainless steel

to remove the cover plates F 106 Cfl S1 from floor panel F 304 Cfl S1 while standing
L 35 x W 240 x H 950 mm | 0.988 kg



Attention: do not use for cover plate F 314 Cfl S1

Tape

double-sided
50 meter roll



TP 1.90

rayon

for fixing carpets on phenol coated panels SP 30 / SP 13 / SP 12 / SP 50 / SP 60, layers on both sides with rubber adhesive, 50 m long

W 50 x H 1 mm | 0.2 kg

Set

**flame retardant Cfl-S1
25 m² Set**

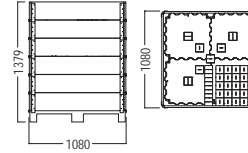


ECO25 CFL S1.90

polypropylen/wood

Set consisting of: 25 × base plate F 304 Cfl S1 (1 m²), 66 × cover plate F 106 Cfl S1 (89 × 89 × 19 mm), 36 × cover plate F 107 Cfl S1 (89 × 44 × 19 mm), 1 × tool F 1 for cover plate, flame retardant Cfl-S1, Delivery in reusable permanent packaging: Pallet with pallet support frame

L 1080 × W 1080 × H 1379 mm | 342.894 kg



Set

**flame retardant Cfl-S1
25 LM Slope edge elements**

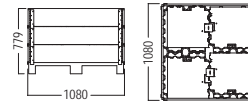


SLO25 CFL S1.90

polypropylen/wood

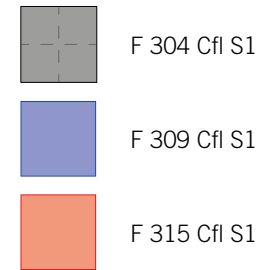
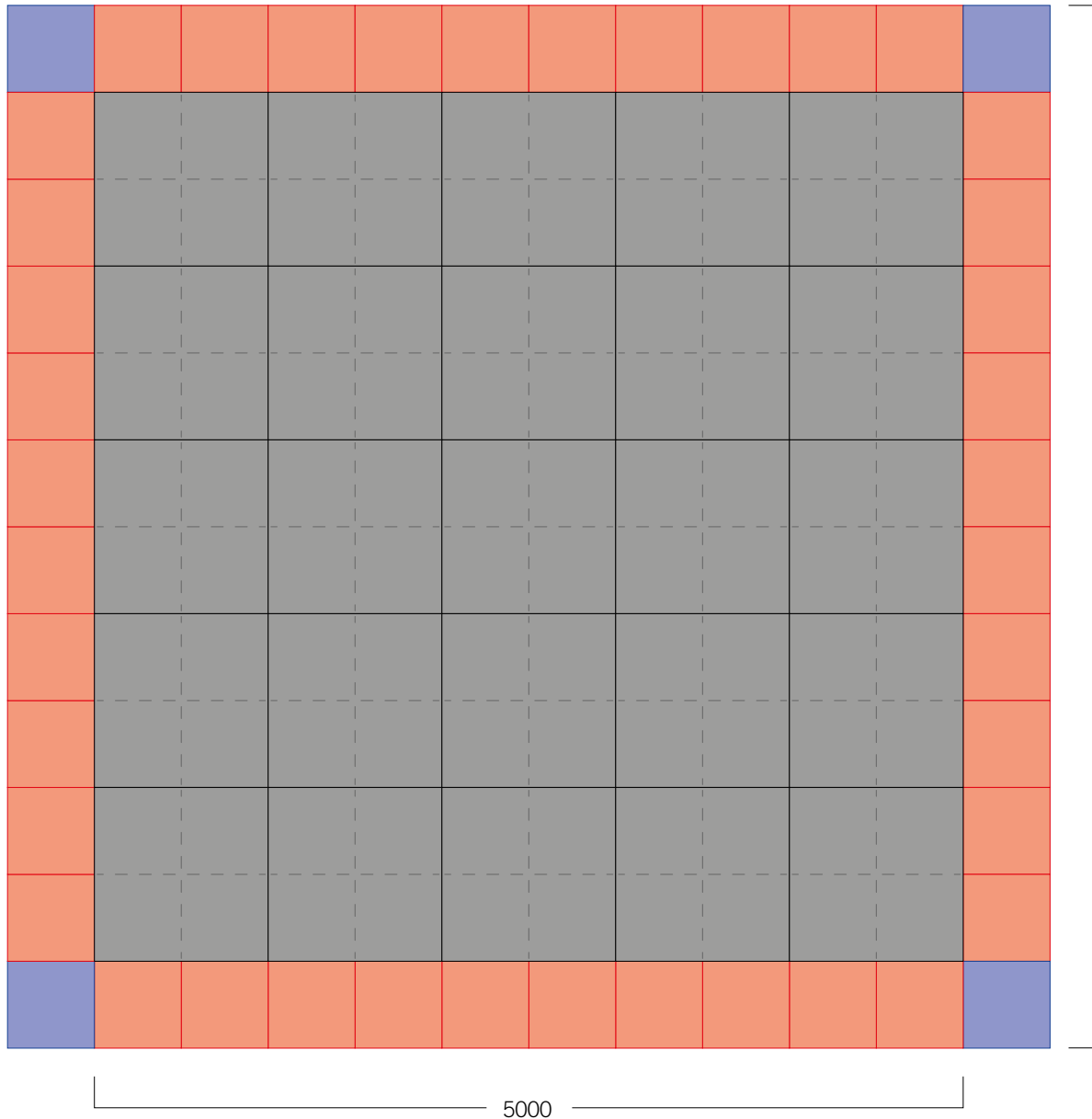
Set consisting of: 25 LM slope edge elements straight: 42 × slope edge tile F 315 Cfl S1 and 4 LM slope edge corner tiles: 4 × slope edge corner tile F309 Cfl S1, flame retardant Cfl-S1, delivery in reusable permanent packaging: pallet with mounting frame

L 1080 × W 1080 × H 779 mm | 170 kg



➤ technical information

➤ TI-DB-10.0	30
octaeco floor floor laying example	
➤ TI-DB-10.1	32
octaeco floor removing inspection panel F 308 Cfl S1	
➤ TI-DB-10.2	33
octaeco floor connectors F 314 Cfl S1	
➤ TI-DB-10.3	34
octaeco floor connector cover cap cable outlet F 106 Cfl S	
➤ TI-DB-10.4	35
octaeco floor half cover cap cable outlet F 107 Cfl S1	
➤ TI-DB-10.5	36
octaeco floor height adaptor F 312 Cfl S1 with floor panel F 304 Cfl S1	
➤ TI-DB-10.6	37
octaeco floor underfloor installations	
➤ TI-DB-10.7	38
octaeco floor positioning of spacer brackets F 313 Cfl S1 for plinth panel	
➤ TI-DB-10.8	39
octaeco floor corner mounting position SO 620	
➤ TI-DB-10.9	40
octaeco floor corner mounting position SO 630	
➤ TI-DB-11.0	41
octaeco floor slope tile skirting extrusion SO 640	



Parts:

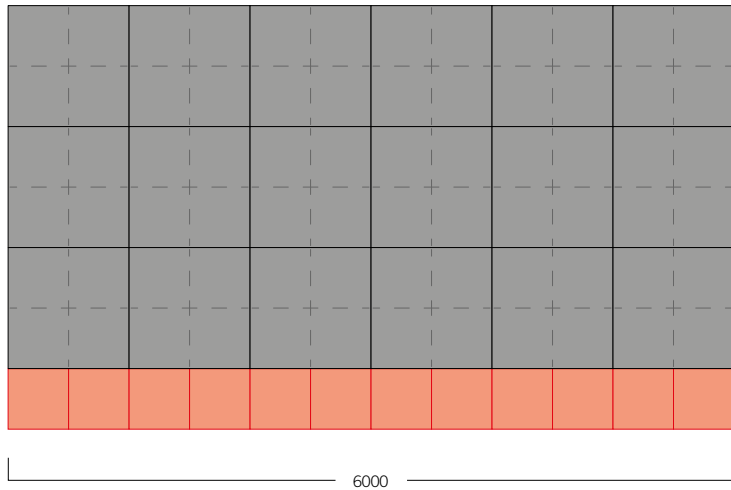
- 25 × F 304 Cfl S1
- 4 × F 309 Cfl S1
- 40 × F 315 Cfl S1
- 2 × SO 640
- 4 × SO 640/L
- 4 × SO 640/R

Attention:

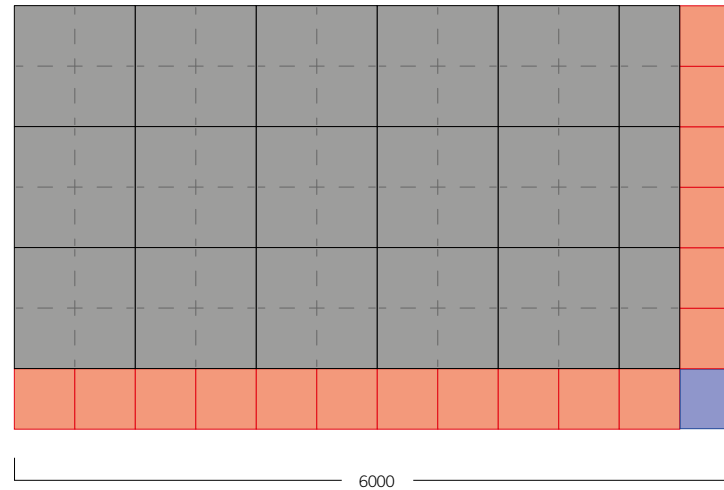
When using trucks, wooden strips must be placed under the wheels!

When using mobile lifting platforms, laying plates must be used during this time!

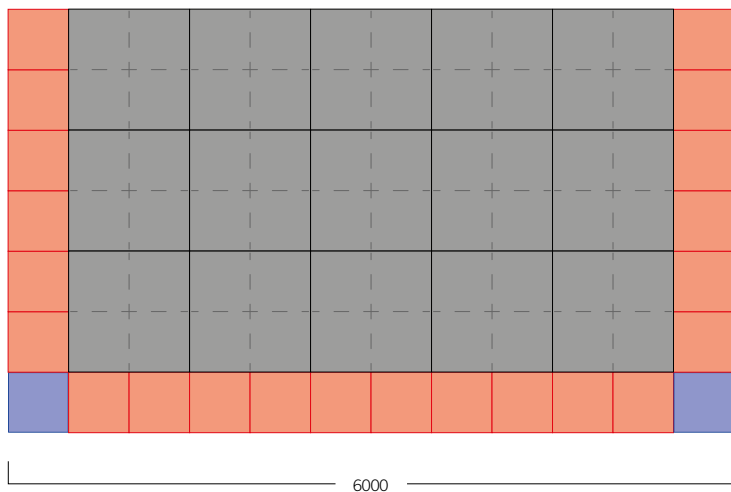
open to front / walls to three sides



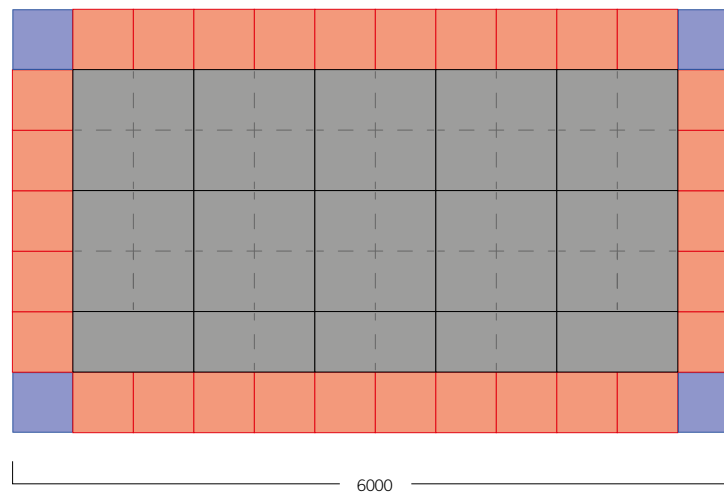
open to front and to one side / walls to two sides

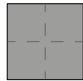




open to front and to two sides / wall to the back



open to all sides

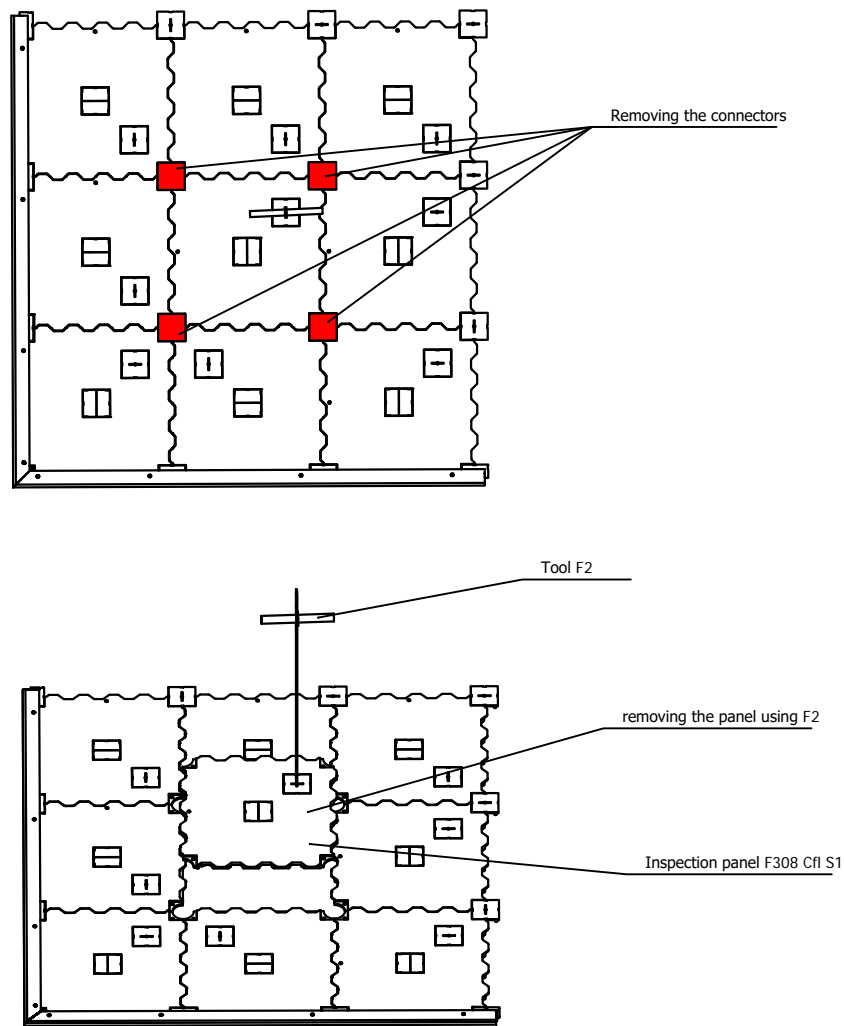


-  F 304 Cfl S1
-  F 309 Cfl S1
-  F 315 Cfl S1

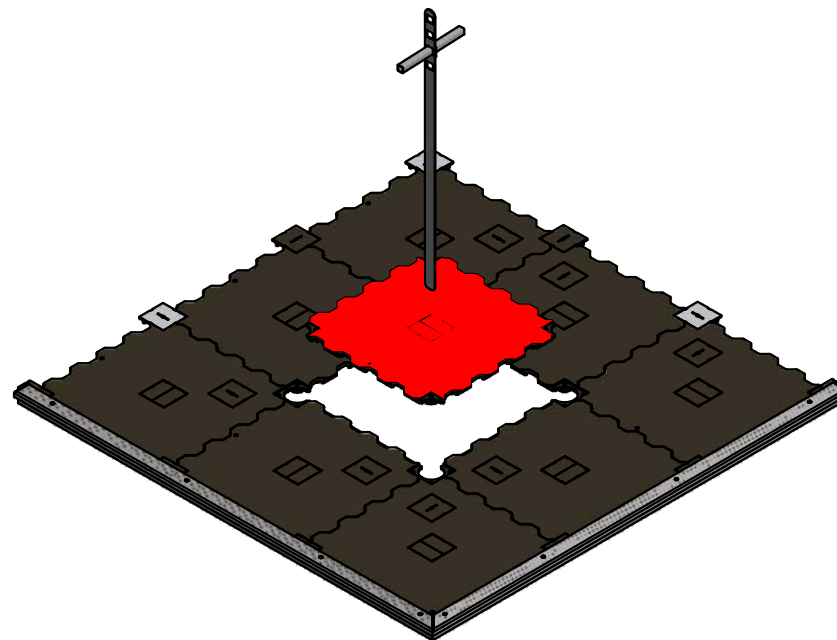
Attention:

When using trucks, wooden strips must be placed under the wheels!

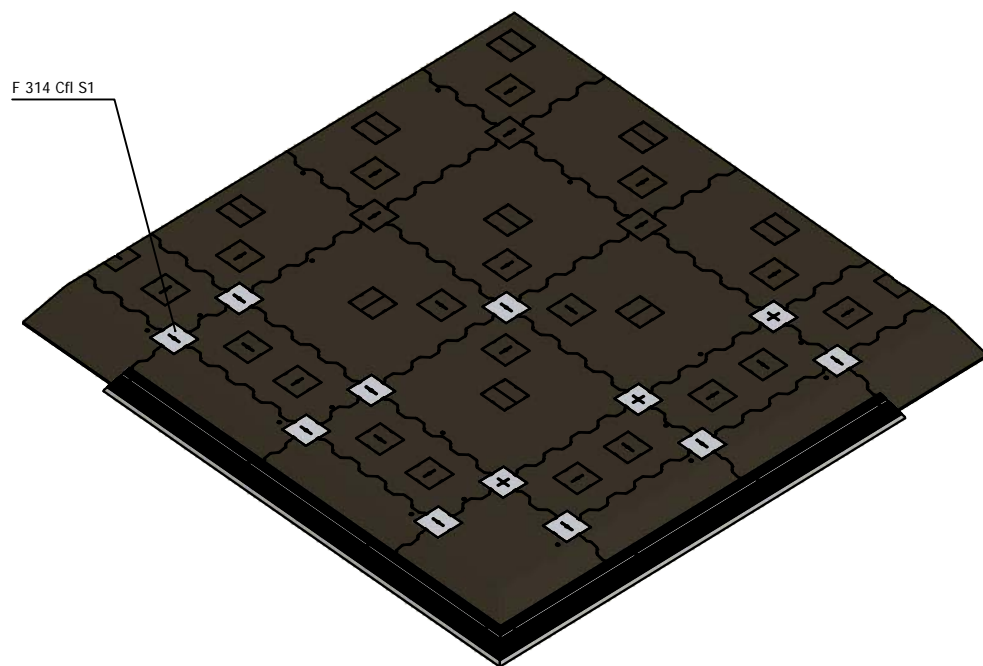
When using mobile lifting platforms, laying plates must be used during this time!



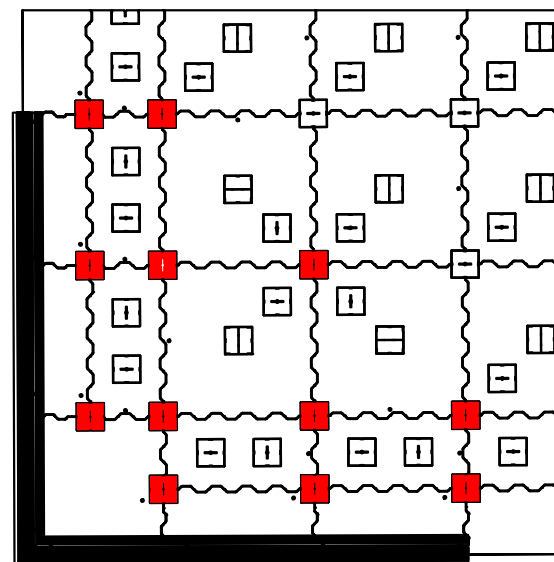
The inspection panel F 308 Cfl S1 has no rear hook and can be removed by simply lifting it upwards.
First remove the surrounding connectors, then use the F2 tool to take out the panel in order to access the installations under the floor.



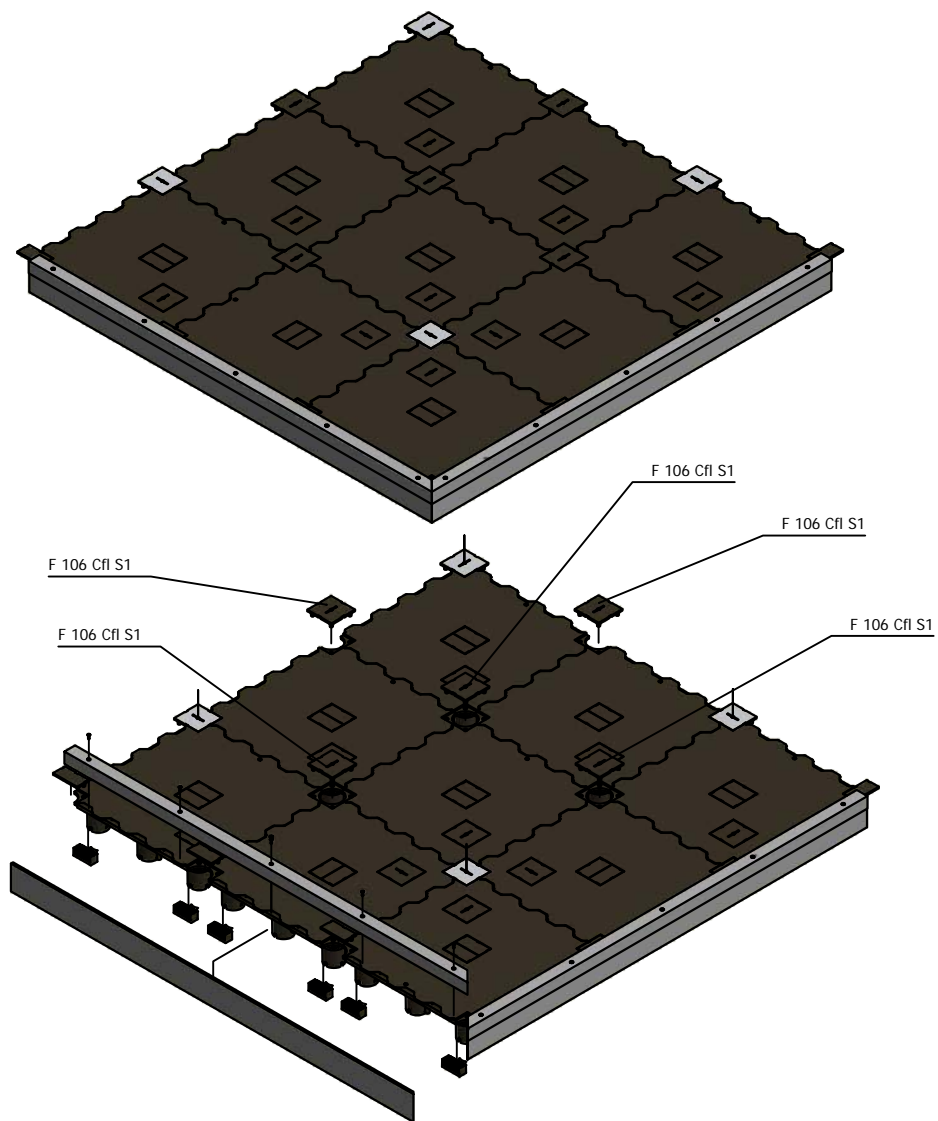
All dimensions in mm!
The drawing remains basically valid!



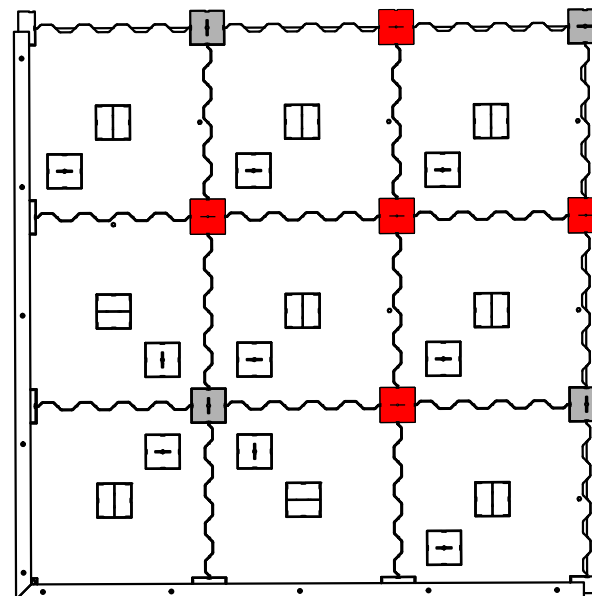
The F 314 Cfl S1 connectors are used in the middle of F 304 Cfl S1, which is a composite of four panels. The F 315 Cfl S1 ramp elements and the F 309 Cfl S1 must also be connected with the F 314 Cfl S1 connectors.



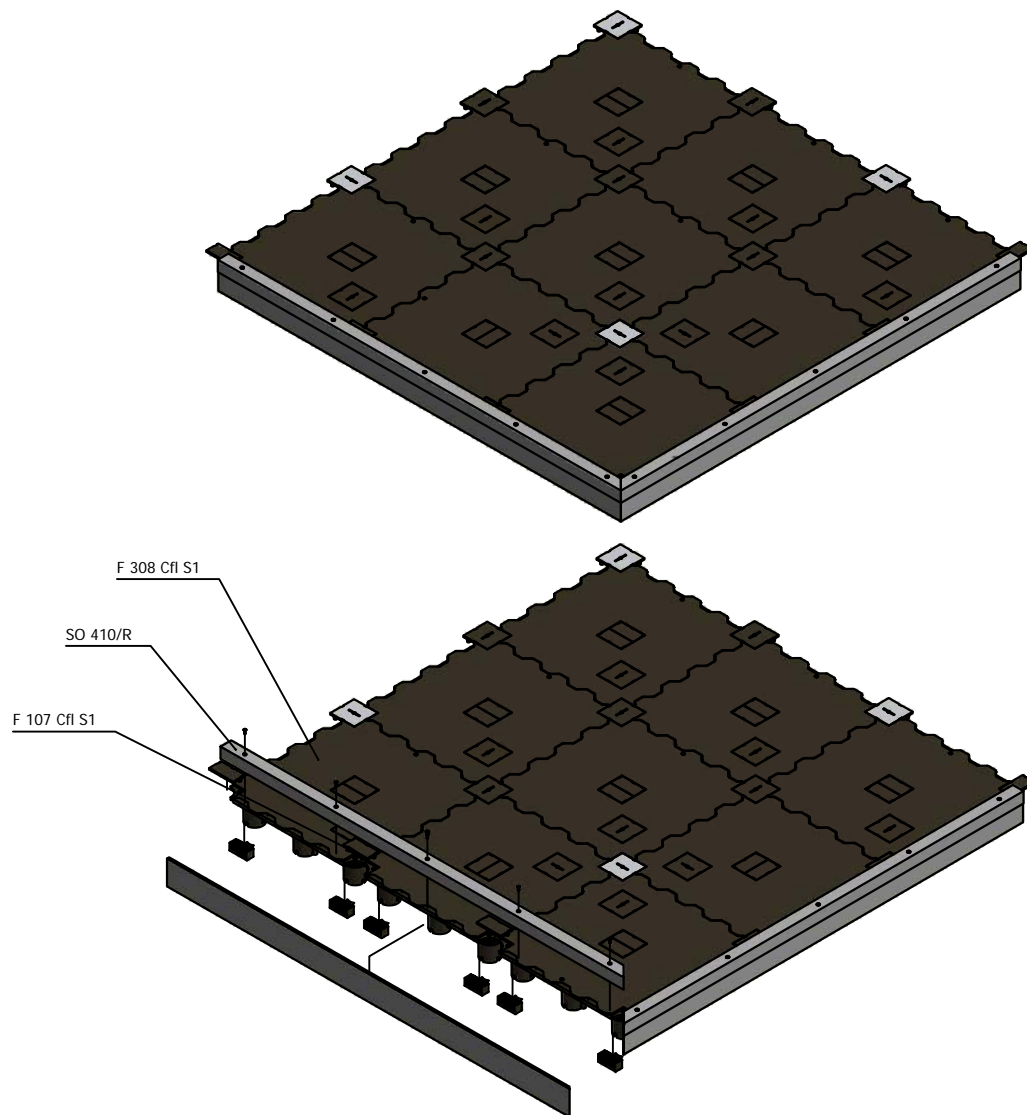
All dimensions in mm!
The drawing remains basically valid!



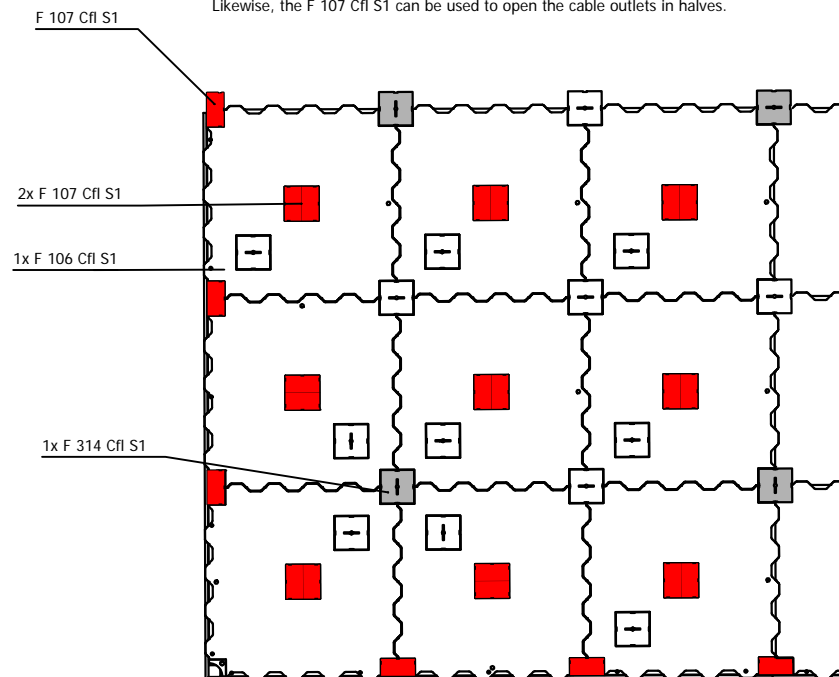
The F 106 Cfl S1 connectors are placed at the corners and sides of F 304 Cfl S1, a composite of four panels. They can also be used to cover cable outlets.



All dimensions in mm!
The drawing remains basically valid!



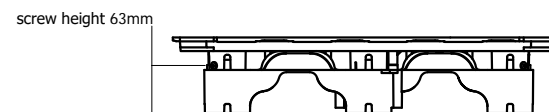
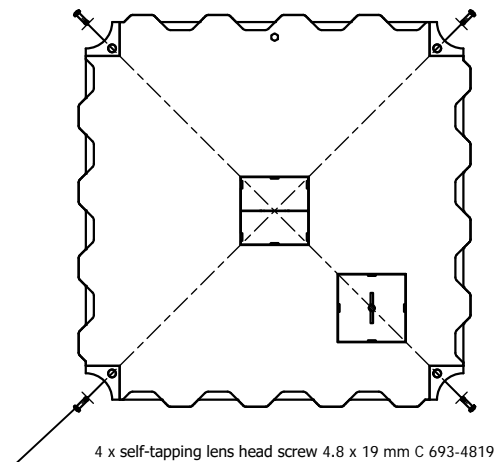
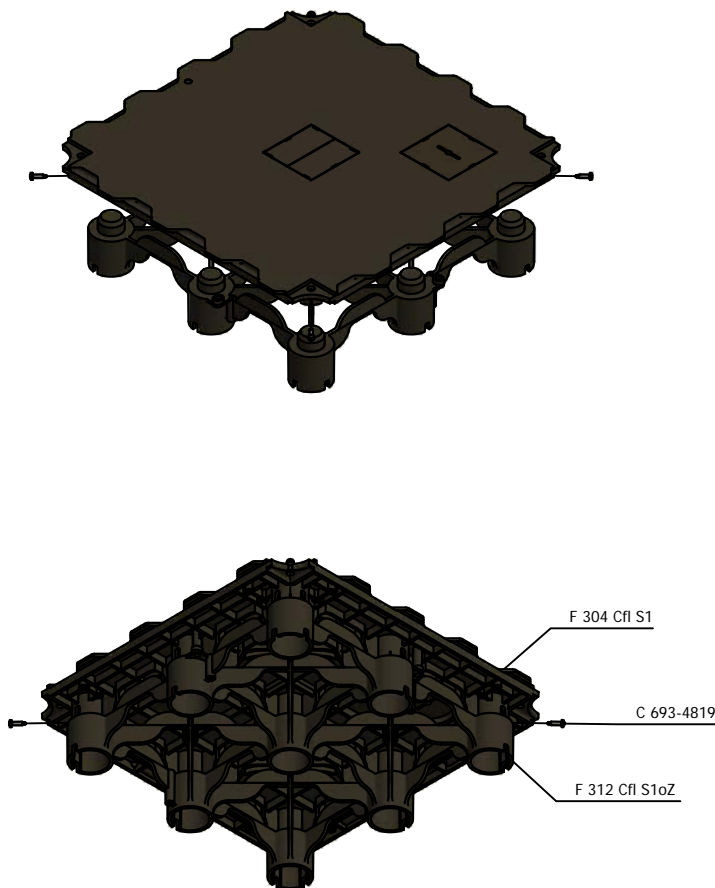
The F 107 Cfl S1 connectors are inserted at the outer edge of the OCTAeco floor surface at each joint of the F 304 Cfl S1 panels.
After installation, the connectors are secured with the SO 410 or SO 400 skirting extrusion.
Likewise, the F 107 Cfl S1 can be used to open the cable outlets in halves.



All dimensions in mm!
The drawing remains basically valid!

Mounting the height adaptor F 312 Cfl S1 with floor panel F 304 Cfl S1

The height adaptor is screwed to the floor panel attachment points with 4.8 x 19 mm self-tapping screws. The screws are fixed over the diagonal of the floor panel.

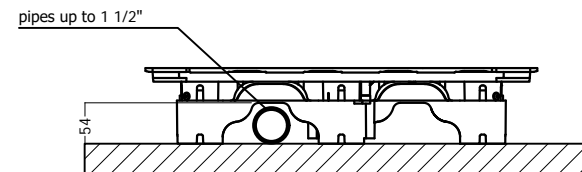
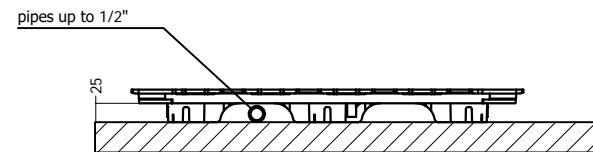
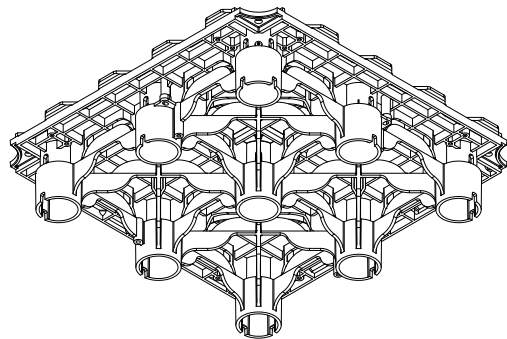
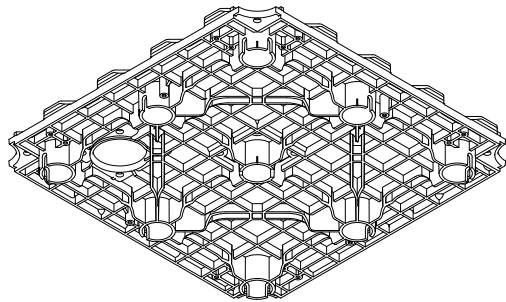


All dimensions in mm!
The drawing remains basically valid!

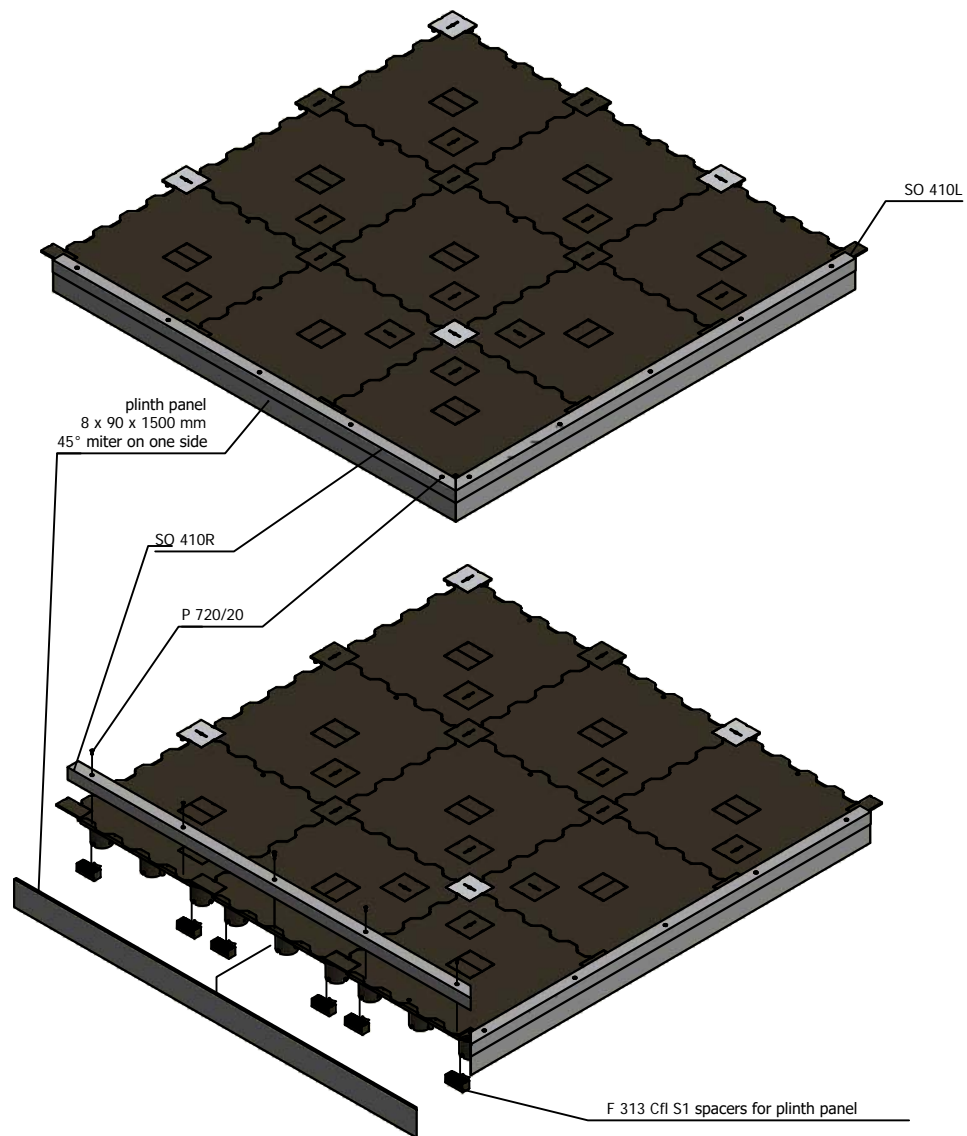
Pipes or cables can be laid under the floor between the attachment points.

0,5 inch pipes or installations up to 25 mm high can be laid under the floor.

With an additional elevation under a floor panel 1,5 inch pipes or installations up to 54 mm high can be installed.



All dimensions in mm!
The drawing remains basically valid!

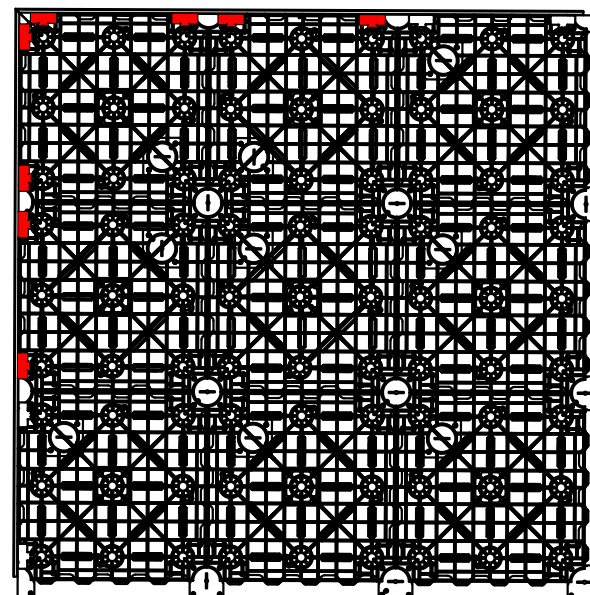


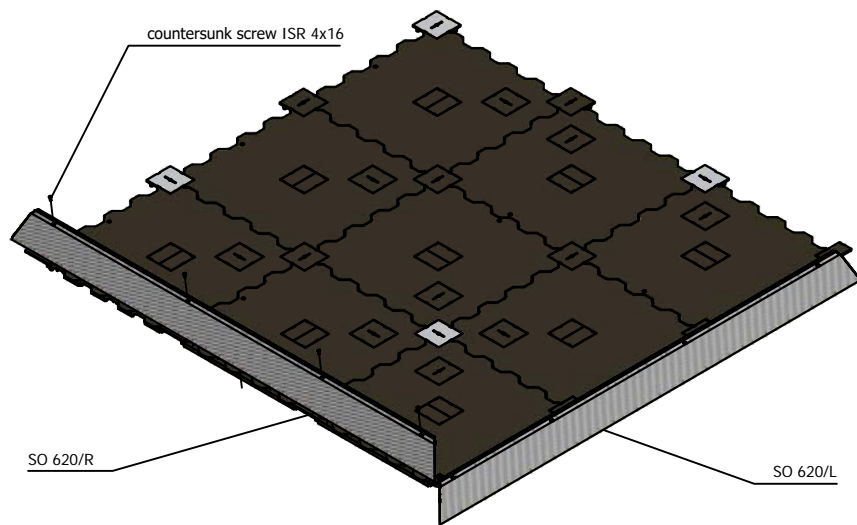
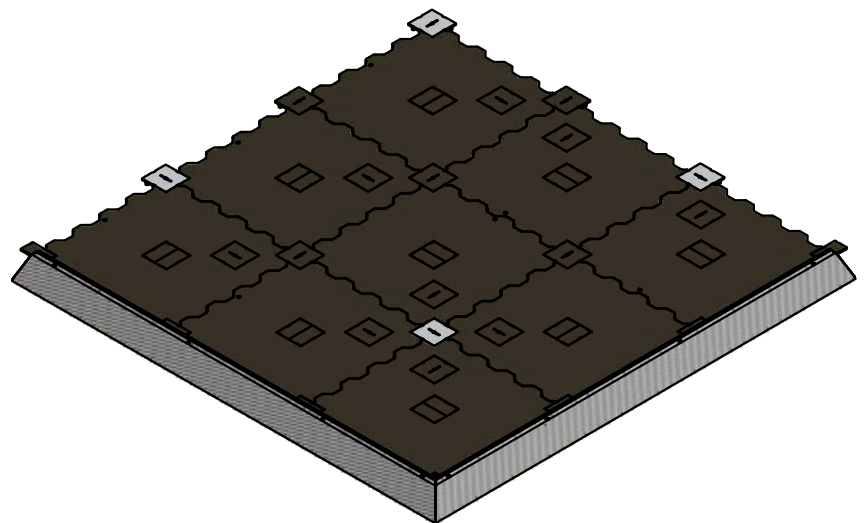
All dimensions in mm!
The drawing remains basically valid!

The spacers are placed on the outer edges of the OCTAeco floor at each start and end position.

On the corner panel, the spacers are placed at each position facing the plinth panel.

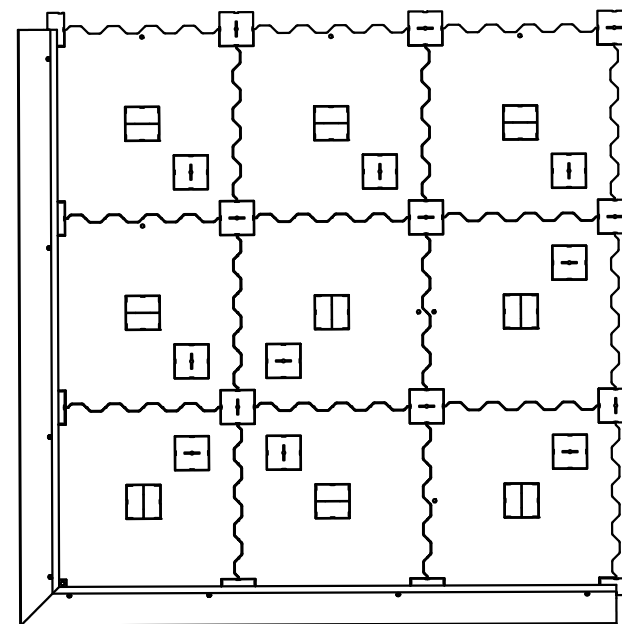
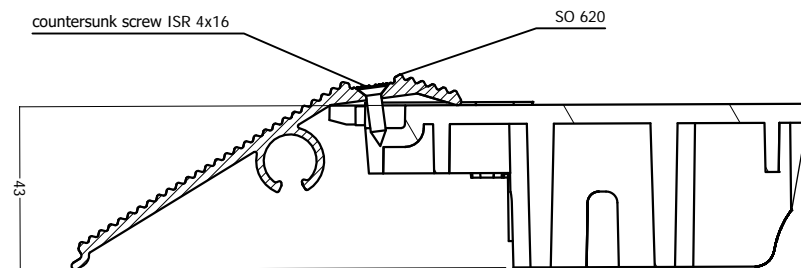
The plinth panel is placed in front of the spacers and fastened with the skirting extrusion from above using self-tapping countersunk screws P 720/20.



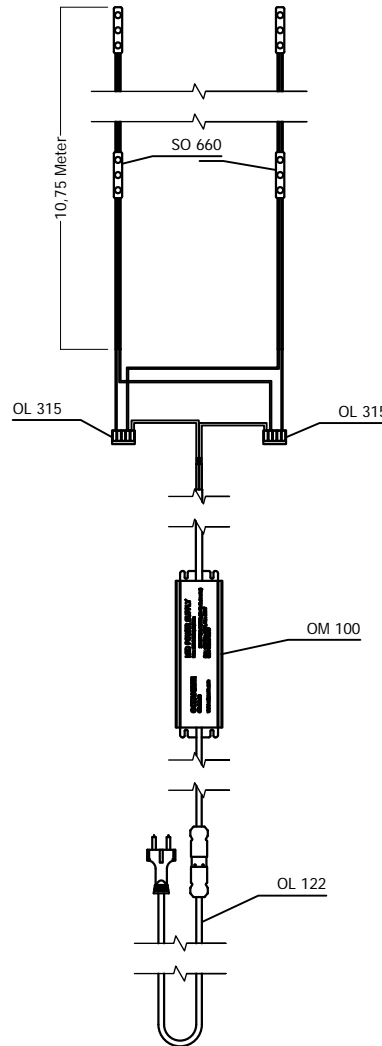
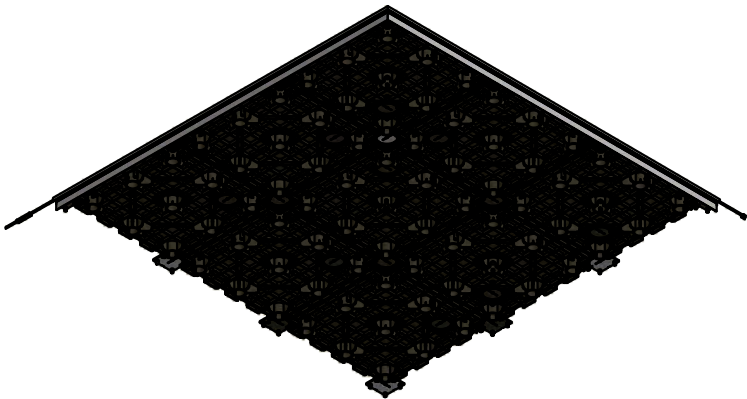
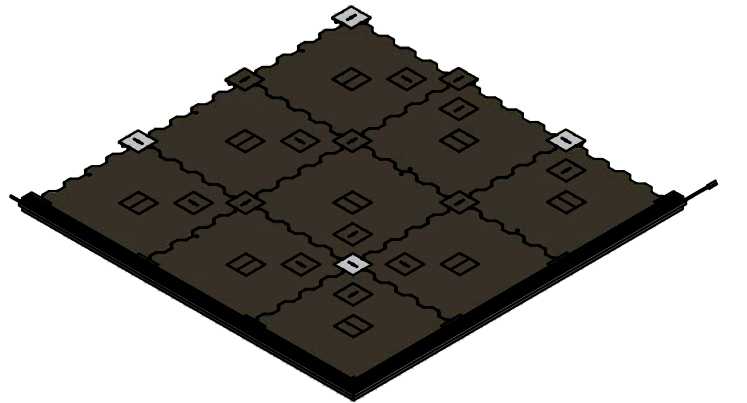


Corner mounting position

The SO 620/L and R floor edgings are attached with ISR 4x16 countersunk screws. Please make sure to start laying the strips from the corner.



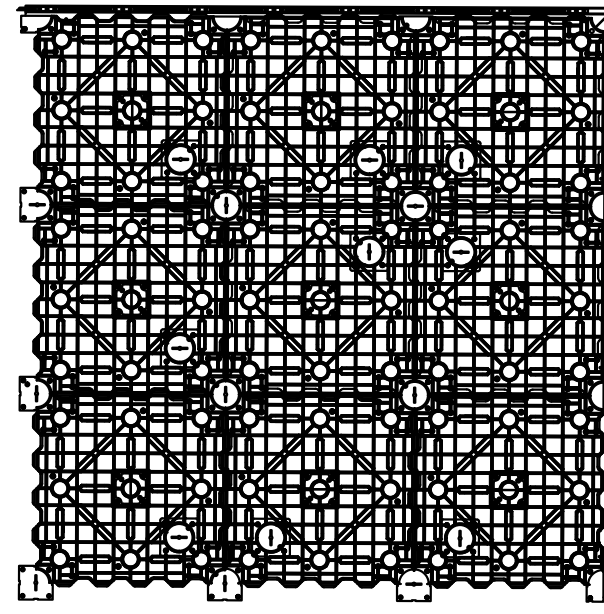
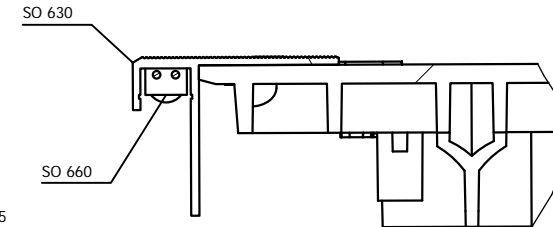
All dimensions in mm!
The drawing remains basically valid!



The angle extrusions SO 630/L and R for LEDs are mounted with countersunk screws ISR 4x16. Please make sure to start laying the angles and LEDs from the corner.

Attention: LEDs reflections on shiny floor!

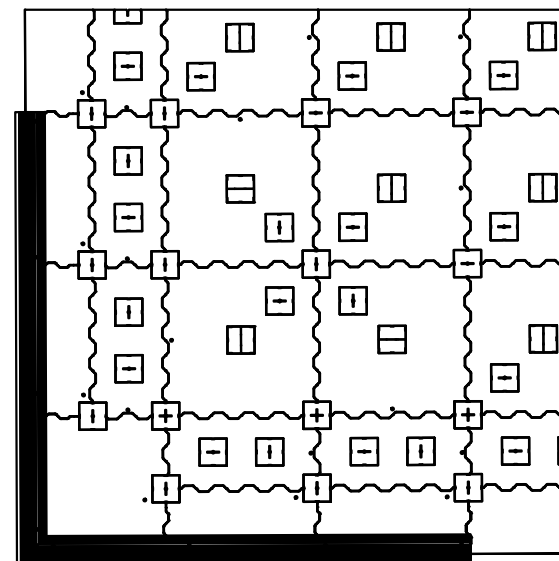
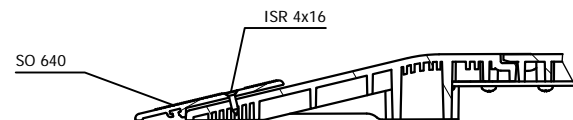
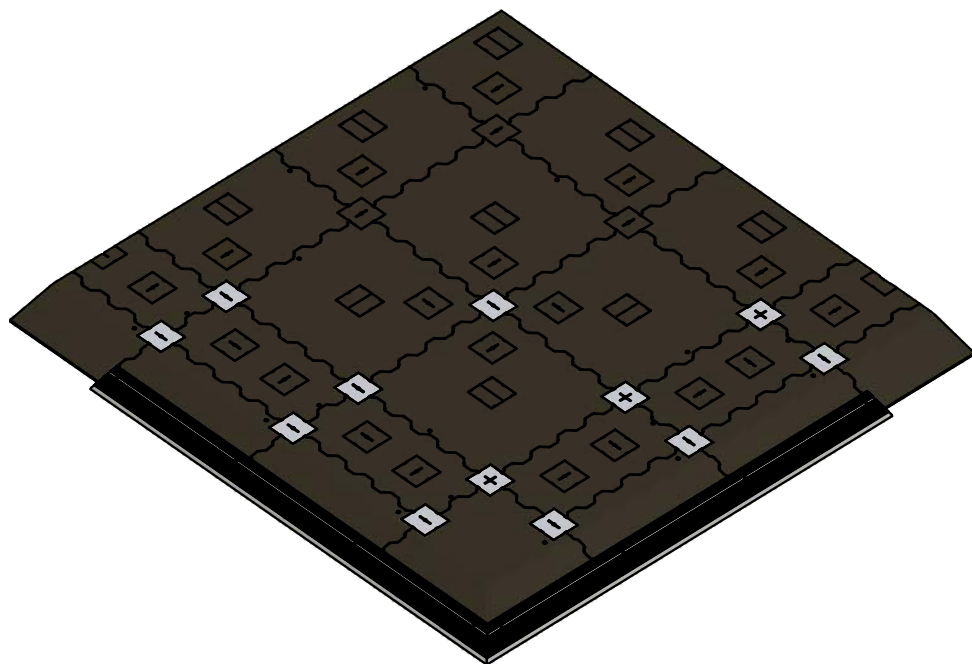
SO 660 completely illuminates the plinth panel area and can be installed with an OM 100 converter up to 21.5 m in length.



All dimensions in mm!
The drawing remains basically valid!

Slope tile skirting extrusions

The slope tile skirting extrusions SO 640/L and R for LEDs are mounted with ISR 4x16 countersunk screws. Please make sure to start laying the strips from the corner.



All dimensions in mm!
The drawing remains basically valid!



OCTANORM®-Vertriebs-GmbH

für Bauelemente
Raiffeisenstraße 39
70794 Filderstadt, Germany
T +49 711 77003 0
E info@octanorm.de

Adria

↗ octanormadria.com

Australia

↗ octanorm.com.au

Belgium

↗ octanorm.be

China

↗ octanorm.cn

Emirates

↗ octanormemirates.net

Espana

↗ octanorm.es

France

↗ octanorm.fr

Hellas

↗ octanorm.gr

Italia

↗ octanorm.com

Japan

↗ octanorm.co.jp

México

↗ octanorm.com.mx

Nigeria

↗ it-al.design

Nordic

↗ octanorm.se

North America

↗ octanormna.com

Polska

↗ octanorm.pl

South Africa

↗ octanorm.co.za

UK

↗ octanorm.uk

↗ octanorm.com